



19TH ANNUAL

FLECKVIEH BULL & FEMALE SALE

Saturday December 2, 2023 | 3 PM On the farm | Valleyview, AB

Welcome to our 19th Annual Sale



It's shocking to fathom that next year will be our 20th sale. We couldn't have made it this far in the industry without our repeat customers and the trust they have in our genetics. One of the reasons our customers keep coming back is that our bulls and females possess great longevity. By feeding high forage diets and allowing our cattle more time, they develop at a more natural rate. It humbles us to see our bulls and females working hard to meet the demands of this exciting industry.

What a time to be in the beef industry. We believe that if you're using Fleckvieh genetics you have a great advantage. With the high price of feed the demand for performance cattle has never been higher. It's more efficient for a hard-working cow to add the pounds to a calf, rather than pay extra for feed. This advantage is one reason why we have added two commercial heifer lots to our annual sale. The demand for Fleckvieh cattle is growing each year.

One of the fastest ways to upvalue yourself as a producer is to have a herd of efficient cows, with the milk quality to raise big calves; and

Fleckvieh are just that. In addition to our powerful Fleckvieh bulls, open Full Fleckvieh heifers, and registered bred heifers, we also have 90 Fleckvieh-influenced commercial bred heifers on offer. We exposed them for two different calving start-times, January 29 and March 26. The earlier group had a two-week breeding window. Additionally, we are offering a Wintering program where we could feed your purchases up until a month prior to their due date. Hopefully this can assist anyone that may be short on feed this year. Contact me for details on costs.

This year we have three new herd sire groups: Geyser, Baldwin, and Trader. Geyser is bull that we raised and retained walking rights on to proliferate his dams' bloodlines. JNR Baldwin's first calf crop has a ton of du-ability, hair, and eye appeal; and the Double Bar D Traders are fast-growing and well-muscled. Elevation, Electric Avenue, Dynamite, Bell, Ozark, Gage, Sully, and Kitimat are continuing to offer us the type of cattle we desire to produce.

To continue to offer our customers with cattle that will help them meet the demands of the industry, each year we carcass ultrasound all our sale bulls and heifers, as well as our own replacement heifers. The results will be on the home page of our website within "Interactive Supplement Sheet". In addition to the carcass scan results, this document will also contain links to CSA listings, videos, scrotal measurements, diluter status, and weights. Information is added as it becomes available.

We would like to remind potential buyers of a few things:

- **Bulls can stay on the farm through the Winter free of charge.**
- **Bulls are delivered for free (within Western Canada) in the Spring.**
- **For bull purchases, buyers have the option to pay 50% sale day and the remainder in the Spring upon delivery.**
- **Videos will be accessible approximately one week prior to the sale through a link on our websites home page. Click "Lot Videos" on the right-hand side.**
- **Our sales start time is 3:00PM.**

Once again, a huge thank you to Stefon Beechinor and Mackenzie Stout for photographing all our sale animals. They always do an awesome job. Thank you to Keltey Whelan for putting our catalogue together again. Lastly, thank you to my employees and family for the work they do all year long and on sale day.

If you have questions regarding our breeding program or this year's offering, call me any time at 780-524-9322. You are welcome to tour through the pens prior to sale day, as well. We hope to see you Saturday December 2nd. Stay for a delicious bowl of Mom's chilli following our 3 o' clock sale.

Tony



Tony & Annabelle Wolfe

Riley, Allison Wolfe

Box 2074

Valleyview, AB T0H 3N0

cell 780-524-9322

email wolfefarms8@gmail.com

website www.wolfefarms.ca

Kevin and Courtney Wheale

RR4

Rimbey, AB T0C 2J0

Kevin 403-877-3043

Courtney 780-524-9285

email whalenwolfe@gmail.com



19TH ANNUAL FLECKVIEH BULL & FEMALE SALE

Saturday December 2, 2023 | 3 PM On the farm | Valleyview, AB

OFFERING 191 HEAD

74 FLECKVIEH BULLS 11 OPEN HEIFERS 17 BRED HEIFERS 89 COMMERCIAL HEIFERS

SALE STAFF

Auctioneer.....Robert Lind (Timberlind Auctions)
Ringmen.....Henry Roy, Trapper Green

SALE DAY PHONES

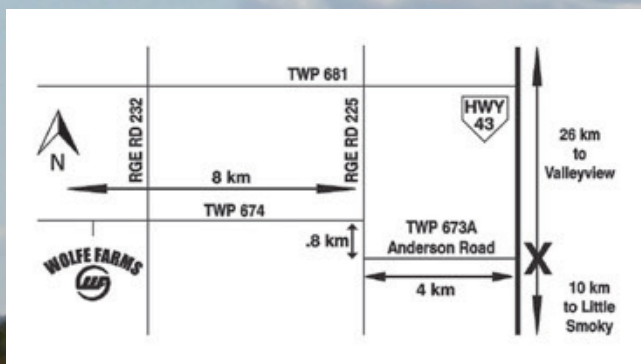
Tony Wolfe.....780-524-9322
John Wolfe.....250-309-0575
Shane Wolfe.....403-556-0729
Courtney Wheale.....780-524-9285
Robert Lind.....780-542-0123
Jerry Repka.....780-210-2333
Gerd Bremmekamp.....780-712-2096

CANADIAN FARM INSURANCE CORP.

Monica Czech.....780-318-3636

All bulls can stay on the farm through the winter and be fed free of charge. For bull purchases, at least 50% down is required sale day and the remainder can be paid in the spring when bulls are delivered.

All animals are on a full herd health vaccination program. Bulls additionally received footrot vaccine in the Spring before going to pasture. They will receive it again before delivery.

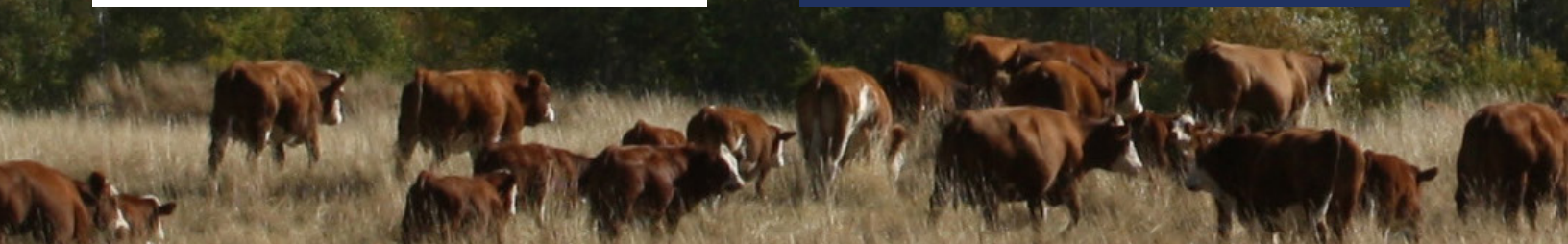


Internet Bidding Available

DLMS

www.dlms.ca

For more information call DLMS:
Mark Shologan 780.699.5082 or
DLMS Purebred Team 780.991.3025



The Wolfe Family



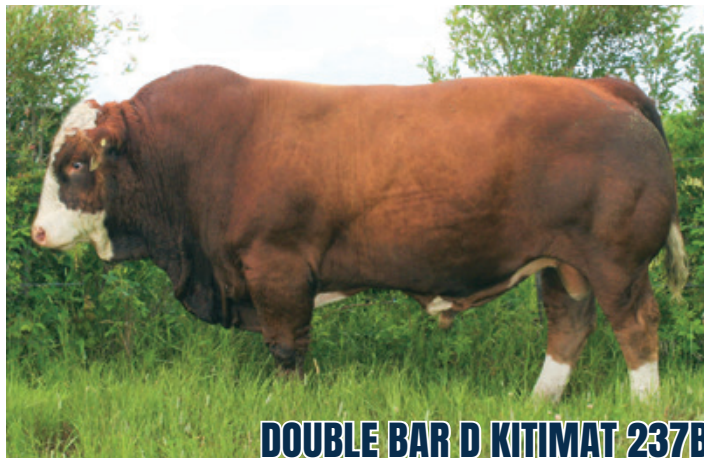
WALKING HERDSIRES



ANCHOR D OZARK 81G



BLACK GOLD ELEVATION 20E



DOUBLE BAR D KITIMAT 237B



DOUBLE BAR D TRADER 19H



FGAF ELECTRIC AVENUE 140E



JNR BALDWIN



RWR SULLY 9E



VIRGINIA GAGE 34G



WOLFE GEYSER FF 885G



WOLFES BELL FF62F



WOLFES GERONIMO FF137G



WOLFES DYNAMITE FF19D

PAST HERDSIRES



BRINK CUSTER E773



BRINK GERONIMO A310



JNR BROKER



VIRGINIA BARCELONA 46X

**7K****ALLY'S KING 7K**

PUREBRED G1438812 AWW 7K MAY 1, 2022

BW 110
Dec 8/22 W 855
May 15/23 W 1345
CE -2.5 BW 9.2 WW 91.1
YW 121.4 M 37.5
MCE -5.3 MWW 83.1

WOLFES THUNDER FF60T
WOLFES DYNAMITE FF19D
MFI ZAILA 78L

BRINK GERONIMO A310
WOLFE FEEBEE 7G
WOLFE ZINNY 753Z

BAR 5 SA EVAN 440L
BAR 5 SA MALISSA 823N
HAXENT
MFL ZAILA 8Z
BRINK LEVI X011
BRINK ANITA Y140
MFI JAHARI 8154
WOLFE MISS 367P

- Our daughter Ally's bull.
- Lots of size and performance in his pedigree. Made the top 10 for AWW.
- Dam is a bigger cow with a lot of milk.

10K**WOLFE KEATON FF 10K**

FULLBLOOD 1438811 TWW 10K APR 30, 2022

BW 92
Dec 8/22 W 735
May 15/23 W 1185
CE 9.3 BW 3.9 WW 69.6
YW 93.9 M 38.8
MCE 5.4 MWW 73.6

JNR'S SALTON
RWR SULLY 9E
IPU MS. ROWEENA 204X

ANCHOR D RAPTOR 392C
LFS SEQUEL 10H
LFS ROSE 31Y

FGAF SELDOM 835L
JNR'S MARGO 2ND
CHAMPS ROMANO
K&S ROSALIND 45R
VIRGINIA MAXIMUS
ANCHOR D ZILEY 392Z
DIAMOND T BO-JANGLE 248W
PURPLE HILL FRAULINE 33P

- Full Fleckvieh.
- Thick, deep, moderate frame Sully son.
- Finer boned. Could make a great heifer bull.
- Dam is a daughter of the A.I. sire, Raptor.

Anchord D Raptor 392C maternal grandsire

**14K****CJ ELECTRON 14K**

PUREBRED SG1438852 CJ 14K MAY 21, 2022

BW 104
Dec 8/22 W 645
May 15/23 W 1095
CE 0.3 BW 7.2 WW 81.9
YW 118.7 M 39.6
MCE -1.8 MWW 80.6

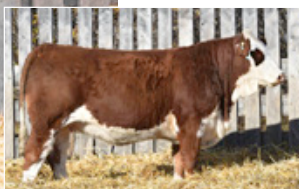
FGAF FRENCH ATTACK 010C
FGAF ELECTRIC AVENUE 140E
GIBBONS DORALEE

BRINK GERONIMO A310
CJ ELU 14E
COURTNEY ADDISON 9A

SIBELLE DIRTY HARRY 25Z
VIRGINIA'S JANE WEST
BAR 5 P SA EVOLUTION 418S
DORA LEE'S DUCHESS FF152T
BRINK LEVI X011
BRINK ANITA Y140
WOLFES STETSON FF 35S
COURTNEY XANDREA 4X

- Scur polled.
- Very deep bodied with a wide hip.
- Big feet.
- Just an end of May calf.
- Full sister (pictured) sold last year to Klassen Ranching of Debolt AB.

CJ Eel 22J full sister

**16K****CJ BELLVAN FF 16K**

FULLBLOOD 1438982 CJ 16K APR 20, 2022

BW 96
Dec 8/22 W 700
May 15/23 W 1095
CE 4.5 BW 5.3 WW 74.4
YW 96.7 M 37
MCE 3.6 MWW 74.2

BEL C&B WESTERN 2ND
WOLFES BELL FF62F
WOLFES CANDY C138W

KCN E208
CJ UNA FF 16G
RDG UNITY FF15E

SIM-ROC C&B WESTERN
ADRIAN
BRINK AMOS S621
BHR LADY MARIETTA H264E
PANZER
SRF MISS BIGFOOT S162
WOLFES BREWSTER FF78B
RDG UDELE FF10B

- Full Fleckvieh.
- Old school pedigree. His sire is a direct son of "CB2", one of the most famous bulls in the Fleckvieh breed.
- Will make some awesome replacement heifers!

RDG Unity FF15E granddam



**19K****CJ SYRUP 19K**

PUREBRED G1438983 CJ 19K APR 12, 2022

BW 90
Dec 8/22 W 675
May 15/23 W 1180
CE 7.8 BW 4.5 WW 70.4
YW 93.4 M 39.1
MCE 2.3 MWW 74.3

JNR'S SALTON
RWR SULLY 9E
IPU MS. ROWEENA 204X

WOLFES DYNAMITE FF19D
CJ ZYRA 19H
COURTNEY ZABRINA 772Z

FGAF SELDOM 835L
JNR'S MARGO 2ND
CHAMPS ROMANO
K&S ROSALIND 45R
WOLFES THUNDER FF60T
MFI ZAILA 78L
BEECH BROS X MAN 918X
COURTNEY XANDREA 4X

- Don't be fooled by his moderate birthweight, this early born calf inherited performance from his maternal grandsire Dynamite.
- Inherited his sires body depth and muscle.

21K**WOLFE KONRAD FF 21K**

FULLBLOOD 1438984 TWW 21K APR 13, 2022

BW 90
Dec 8/22 W 780
May 15/23 W 1255
CE 6.6 BW 4.4 WW 67.5
YW 89.7 M 34.9
MCE 4.6 MWW 68.7

JNR'S SALTON
RWR SULLY 9E
IPU MS. ROWEENA 204X

BAR 5 FF WILLIE 426Y
KEATO HARMONY 21H
JNR AWAKEN

FGAF SELDOM 835L
JNR'S MARGO 2ND
CHAMPS ROMANO
K&S ROSALIND 45R
LEEUPORT WILKO
RAAP N SKRAAP MADA
BRINK BULLET PROOF A342
JNR SHAMU

- Full Fleckvieh.
- One of the first calves born last year so there is excellent fertility in the cow.
- Should calve well and make great females.
- Dam was purchased from Keato Meadow Simmentals. She is a great moderate framed cow with a tight udder.

**52K****WOLFE KANUCK FF 52K**

FULLBLOOD 1438985 TWW 52K APR 7, 2022

BW 96
Dec 8/22 W 755
May 15/23 W 1260
CE 11.2 BW 3.2 WW 64.7
YW 87.1 M 37.3
MCE 6.7 MWW 69.7

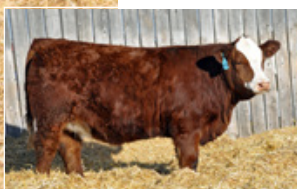
JNR'S SALTON
RWR SULLY 9E
IPU MS. ROWEENA 204X

VIRGINIA MARQUEE 423D
VIRGINIA HARLEEN 052H
IPU MS RONDA 45T

FGAF SELDOM 835L
JNR'S MARGO 2ND
CHAMPS ROMANO
K&S ROSALIND 45R
VIRGINIA RADISON 5Z
VIRGINIA BRANDY 423B
CEN LAREDO 519L
IPU 280D MS RHONDA 33M

- Full Fleckvieh.
- One of the best Sully sons we've offered. That is saying a lot because we've sold quite a few.
- His dam was purchased from Virginia Ranch. She was a feature lot in their sale that year and we are very happy with her.

Virginia Harleen 052H dam as a heifer

**66K****WOLFE KLUB FF 66K**

POLLED FULLBLOOD P1439072 TWW 66K FEB 2, 2022

BW 92
Aug 23/22 W 805
Feb 11/23 W 1295
CE 2.4 BW 6.7 WW 71.9
YW 100.8 M 37.8
MCE 1.7 MWW 73.8

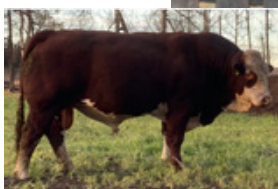
CFES OPEN RANGE 860Y
SWANTEWITT GOLF 216G
SWANTEWITT DALETA 275D

SWANTEWITT FRITZ 11F
SWANTEWITT HADLEY 66H
SWANTEWITT XADRIAN 105X

PROSTOCK HUGO 7052T
MS JMC KERSTIN K404
VIRGINIA BARCELONA 46X
SWANTEWITT ALETA 205A
BAR 5 SA GLOVER 854T
SWANTEWITT MISS 2A
WOLFE'S PASTA FF510N
SWANTEWITT SOPHIE 207S

- Full Fleckvieh, polled.
- Very good temperament.
- Some extra age on this bull.
- We purchased his dam as a bred from Swantewitt Simmentals and this is the calf she was carrying.

Swantewitt Golf 216G sire





72K

WOLFE KONA FF 72K

FULLBLOOD 1438987 TWW 72K APR 18, 2022

BW 98
Dec 8/22 W 860
May 15/23 W 1460
CE 0.7 BW 6.6 WW 81.9
YW 121.8 M 44.4
MCE -4.6 MWW 85.4

FGAF FRENCH ATTACK 010C
FGAF ELECTRIC AVENUE 140E
GIBBONS DORALEE

WOLFES THUNDER FF60T
WOLFES DIXIE FF72D
DSLS SAHARA FF32S

SIBELLE DIRTY HARRY 25Z
VIRGINIAS JANE WEST
BAR 5 P SA EVOLUTION 418S
DORA LEE'S DUCHESS FF152T
BAR 5 SA EVAN 440L
BAR 5 SA MALISSA 823N
HAXENT
DSLS MAYA FF8M

- Full Fleckvieh.
- Has been a stand-out since he was a young calf.
- One of the largest-hipped, and thickest bulls on offer.
- We are expecting two embryo calves from his dam. She already has an amazing production record.
- Maternal brother is a herdsire for Swantewitt Simmentals of Peers AB.
- Has a big goggle on his other side.



Wolfe's Dixie FF72D dam

95K

WOLFE KARL FF 95K

FULLBLOOD 1438804 TWW 95K APR 28, 2022

BW 102
Dec 8/22 W 800
May 15/23 W 1345
CE 2.3 BW 6.2 WW 78.7
YW 115.2 M 41.1
MCE 0.4 MWW 80.5

FGAF FRENCH ATTACK 010C
FGAF ELECTRIC AVENUE 140E
GIBBONS DORALEE

SOUTHSEVEN MR ADONIS 96Z
MMWK MS WHIMSICAL 95F
MMWK WHIMSICAL 95A

SIBELLE DIRTY HARRY 25Z
VIRGINIAS JANE WEST
BAR 5 P SA EVOLUTION 418S
DORA LEE'S DUCHESS FF152T
BLCC MR ADONIS 30X
SOUTH SEVEN MISS 70S
GIDSCO APPOLLO 3F
MOOSE CREEK WHIMSICAL 59W

- Full Fleckvieh.
- Straight, strong feet. His sire Avenue really throws this into his calves.
- Big scrotum.
- Dam is a direct "Stuey" daughter with a great udder. We purchased her from Willow Creek's Fullblood dispersal.

Southsevan Mr Adonis 96Z maternal grandsire



109K

WOLFE KIRBY FF 109K

FULLBLOOD 1438817 TWW 109K MAY 2, 2022

BW 105
Dec 8/22 W 750
May 15/23 W 1310
CE 9.9 BW 4.9 WW 65.6
YW 87.4 M 36.1
MCE 4.7 MWW 68.9

SOUTHSEVEN MR ADONIS 96Z
BLACK GOLD ELEVATION 20E
BLACK GOLD MS FLORA 84B

RWR SULLY 9E
WOLFE GIGI FF 109G
WOLFE ELEN 245E

BLCC MR ADONIS 30X
SOUTH SEVEN MISS 70S
BAR 5 FF HEXAGON 412Y
MFI FLORA 6144
JNR'S SALTON
IPU MS. ROWEENA 204X
DOUBLE BAR D KITIMAT 237B
WOLFE QUINCEE 904C

- Full Fleckvieh.
- One of our favourites.
- Great temperament.
- One of the more powerful Elevation sons.
- Deep cherry red like his picture.
- Great granddam is 904C, her own grandson sells as Lot 904K.

110K

WOLFE KEPLER 110K

PUREBRED G1438846 TWW 110K MAY 15, 2022

BW 97
Dec 8/22 W 825
May 15/23 W 1330
CE 4.7 BW 5.3 WW 69.5
YW 98.3 M 35.6
MCE 2 MWW 70.4

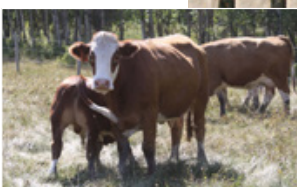
SOUTHSEVEN MR ADONIS 96Z
BLACK GOLD ELEVATION 20E
BLACK GOLD MS FLORA 84B

DOUBLE BAR D AERO 298B
WOLFE GOLDEN 110G
WOLFE DELICIOUS 952D

BLCC MR ADONIS 30X
SOUTH SEVEN MISS 70S
BAR 5 FF HEXAGON 412Y
MFI FLORA 6144
WLSF ABESLY
PROSTOCK GRETCHEN 257Y
BRINK GERONIMO A310
WOLFE APPLE 826A

- One of Courtney's favourite calves last Summer.
- Great growth. Ranked 7th of 83 for AWW and 13th of 83 for AYW.
- Should still calve well based on his pedigree. Very complete bull.

110K with dam



**114K****WOLFE KURT 114K**

PUREBRED G1438841 TWW 114K MAY 12, 2022

BW 99
Dec 8/22 W 725
May 15/23 W 1255
CE 2.5 BW 4.9 WW 71.8
YW 98.9 M 40.1
MCE 0.7 MWW 76

ANCHOR D MR GIBBS 20Z
ANCHOR D OZARK 81G
ANCHOR D ADEL 81A

DOUBLE BAR D AERO 298B
WOLFE GABI 114G
WOLFE XYLA 648X

BAR 5 SA STRIDE 413P
ANCHOR D TYRA 20T
DOUBLE BAR D INTUITION
ANCHOR D CHERISE 101S
WLSF ABESLY
PROSTOCK GRETCHEN 257Y
DSLS DEVAN FF 51T
WOLFE MISS 448R

- An attractive Ozark son from one of our few Aero cows.
- Should be easy calving on cows.
- His granddam was one of Courtney's first 4-H cows, she had an impeccable udder and so does 114K's dam

Double Bar D Aero 298B maternal grandsire

**115K****WOLFE KELLO 115K**

PUREBRED G1438988 TWW 115K APR 23, 2022

BW 105
Dec 8/22 W 820
May 15/23 W 1410
CE 2.8 BW 7 WW 78.2
YW 114.8 M 39.1
MCE 1 MWW 78.2

BLACK GOLD CRUDE
VIRGINIA GAGE 34G
SS UNIQUE 34U FF

WOLFES BREWSTER FF78B
WOLFE GLENDA 115G
WOLFE ZANETA 732Z

STARWEST BRYCK
PATS JANIS 3W
BAR 5 SA BANKER 833R
SS RIKKI 25R FF
SMITHBILT MOLSON 21M
MFI ZAILA 78L
WOLFES STETSON FF 35S
SWANTEWITT 154L

- Large frame passed down from both his sire and maternal grandsire.
- Very strong topline
- Wide all the way through.
- A real powerhouse!

**123K****WOLFE KRISTOFF 123K**

PUREBRED G1438860 TWW 123K JUNE 7, 2022

BW 104
Dec 8/22 W 675
May 15/23 W 1280
CE 2.8 BW 6.6 WW 81.9
YW 116.3 M 37.3
MCE 3 MWW 78.3

BLACK GOLD CRUDE
VIRGINIA GAGE 34G
SS UNIQUE 34U FF

JNR BROKER
WOLFE GRACE 123G
WOLFE MISS 628X

STARWEST BRYCK
PATS JANIS 3W
BAR 5 SA BANKER 833R
SS RIKKI 25R FF
MFI BAMBAM
JNR SHAMU
WOLFE STEIGER FF 32S
JTM MISS POL HARMONY 07H

- Youngest bull in the catalogue.
- Good size and growth for his age.
- Don't overlook him on sale day.

125K**WOLFE KREW 125K**

PUREBRED G1438990 TWW 125K APR 26, 2022

BW 97
Dec 8/22 W 845
May 15/23 W 1255
CE 2.6 BW 5.6 WW 77.8
YW 107.5 M 42.5
MCE 0.3 MWW 81.4

ANCHOR D MR GIBBS 20Z
ANCHOR D OZARK 81G
ANCHOR D ADEL 81A

WOLFES BREWSTER FF78B
WOLFE GEM 125G
WOLFE MISS 622W

BAR 5 SA STRIDE 413P
ANCHOR D TYRA 20T
DOUBLE BAR D INTUITION
ANCHOR D CHERISE 101S
SMITHBILT MOLSON 21M
MFI ZAILA 78L
DSLS DEVAN FF 51T
WOLFE MISS 538S

- Well-muscled and smooth bodied like most Ozark sons.
- Dam has a very tidy udder.

Wolfes Brewster FF78B maternal grandsire



**126K****WOLFE KNOX FF 126K**

FULLBLOOD 1438820 TWW 126K MAY 2, 2022

BW 95
Dec 8/22 W 865
May 15/23 W 1445
CE 3.9 BW 5.2 WW 80.1
YW 114.2 M 43.4
MCE 2.8 MWW 83.4

ANCHOR D MR GIBBS 20Z
ANCHOR D OZARK 81G
ANCHOR D ADEL 81A

KUNTZ SONIC 14C
KSL GLORIA 126G
KSL DOLLY 39D

BAR 5 SA STRIDE 413P
ANCHOR D TYRA 20T
DOUBLE BAR D INTUITION
ANCHOR D CHERISE 101S
SOUTHSEVEN MR ADONIS 96Z
KUNTZ MISS MOSES 03X
LONE STONE ENVOY 143B
BLI REVA

- Full Fleckvieh.
- Lots of growth. Ranked 8th of 83 for AWW and 2nd of 83 for AYW.
- Very easy doing; be sure to have a look at him on the day of the sale.
- Dam was purchased as a bred from KSL Simmentals.

207K**WOLFE KEEFER 207K**

FULLBLOOD 1438829 TWW 207K MAY 7, 2022

BW 96
Dec 8/22 W 730
May 15/23 W 1335
CE 7 BW 3.9 WW 72.9
YW 102.6 M 35.5
MCE 3.4 MWW 72

SOUTHSEVEN MR ADONIS 96Z
BLACK GOLD ELEVATION 20E
BLACK GOLD MS FLORA 84B

WOLFES BREWSTER FF78B
WOLFE EVON 207E
WOLFE YARA 701Y

BLCC MR ADONIS 30X
SOUTH SEVEN MISS 70S
BAR 5 FF HEXAGON 412Y
MFI FLORA 6144
SMITHBILT MOLSON 21M
MFI ZAILA 78L
MFI JAHARI 8154
WOLFE MISS 508S

- Long bodied. Very good feet.
- Shows the same style and attributes of his sire Elevation.
- ¾ brother to Lot 284K.

**212K****WOLFE KAHUNA FF 212K**

FULLBLOOD 1438991 TWW 212K APR 22, 2022

BW 102
Dec 8/22 W 1025
May 15/23 W 1550
CE 7 BW 4.4 WW 68.6
YW 100.6 M 40.4
MCE 3.9 MWW 74.7

BLACK GOLD CRUDE
VIRGINIA GAGE 34G
SS UNIQUE 34U FF

DOUBLE BAR D KITIMAT 237B
WOLFE ELECTA FF 212E
SWANTEWITT CLAIRE 188C

STARWEST BRYCK
PATS JANIS 3W
BAR 5 SA BANKER 833R
SS RIKKI 25R FF
WLSF KAIMAT 930X
DOUBLE BAR D LOLITA 188Z
SWANTEWITT ANTONIUS 43Y
SWANTEWITT ZABOO 199Z

- Full Fleckvieh.
- One of our growthiest bulls. Ranked 2nd of 83 for AWW and 1st of 83 for AYW.
- He is certain to add size and performance to your steers and will make big replacements.
- From the same cow family as last year's lead-off bull, 188J, that sold to long-time customer Klassen Ranching of Debolt AB.



Wolfe Junior FF 212J maternal brother

216K**WOLFE KRAMER FF 216K**

FULLBLOOD 1438854 TWW 216K MAY 23, 2022

BW 106
Dec 8/22 W 800
May 15/23 W 1195
CE 0.6 BW 7.6 WW 86.9
YW 119.1 M 40.9
MCE -3.2 MWW 84.4

WOLFES THUNDER FF60T
WOLFES DYNAMITE FF19D
MFI ZAILA 78L

BRINK GERONIMO A310
WOLFE ELAINE FF 216E
WOLFE ZAYLEE FF 734Z

BAR 5 SA EVAN 440L
BAR 5 SA MALISSA 823N
HAXENT
MFL ZAILA 8Z
BRINK LEVI X011
BRINK ANITA Y140
VIRGINIA BARCELONA 46X
WOLFE'S WENDY FF 55W

- Full Fleckvieh.
- Great growth for being a later calf.
- A moderate-framed Dynamite son. Very deep bodied.
- Last year's maternal brother was our highest-selling Fullblood bull.
- From the Wendy cow family. His dam is a full sister to our first-ever donor Cheyenne (Her own Broker son sells as Lot 885J).



Wolfe Elaine FF 216E dam



**221K****WOLFE KIRK FF 221K**

FULLBLOOD 1438992 TWW 221K APR 23, 2022

BW 97
Dec 8/22 W 885
May 15/23 W 1355
CE 3 BW 5.1 WW 69.3
YW 91 M 32.1
MCE 3.4 MWW 66.8

BEL C&B WESTERN 2ND
WOLFES BELL FF62F
WOLFES CANDY C138W

WOLFE BIRNER FF 318B
WOLFE OONA FF 221E
WOLFE MISS 633X

SIM-ROC C&B WESTERN
ADRIAN
BRINK AMOS S621
BHR LADY MARIETTA H264E
CHERRY CREEK CARLSBERG 2S
SWANTEWITT ZAITH 57Z
SWANTEWITT BUSTER 88T
T&L SECILE 15H

- Full Fleckvieh.
- One of the best Bell sons we have offered to date.
- Excellent style and body length.
- Dam is one of our few Birner daughters. We only used Birner (pictured) for one year before he got hurt but we sure wish we could have used him longer.

Wolfe Birner FF 318B maternal grandsire

**225K****WOLFE KELSON 225K**

POLLED PUREBRED PG1438813 TWW 225K MAY 1, 2022

BW 102
Dec 8/22 W 820
May 15/23 W 1310
CE 1.8 BW 6 WW 77.2
YW 113 M 37.9
MCE -1 MWW 76.5

FGAF FRENCH ATTACK 010C
FGAF ELECTRIC AVENUE 140E
GIBBONS DORALEE

KEATO NELSON 10C
WOLFE ELGA 225E
WOLFE BUMBLEBEE 856B

SIBELLE DIRTY HARRY 25Z
VIRGINIAS JANE WEST
BAR 5 P SA EVOLUTION 418S
DORA LEE'S DUCHESS FF152T
BAR 5 FF WILLIE 426Y
DAYTONS POL PRIMA
ANCHOR D STING 184W
WOLFE MISS 597U

- Polled.
- Packing a lot of muscle and body mass for a polled bull.
- Dam has an excellent udder. This was one of the best qualities thrown by her grandsire Bar 5 Willie, a herdsire used for many years by Keato Meadow Simmentals.

**238K****WOLFE KOMPASS 238K**

FULLBLOOD 1438993 TWW 238K APR 23, 2022

BW 115
Dec 8/22 W 895
May 15/23 W 1415
CE 1.6 BW 8.2 WW 78.1
YW 107.8 M 39.4
MCE 1.4 MWW 78.4

BLACK GOLD ELEVATION 20E
WOLFE GEYSER FF 885G
WOLFE CHEYENNE FF 885C

SWANTEWITT DRIVER 287Y
SWANTEWITT CARLA 238C
SWANTEWITT TANGARINE 121T

SOUTHSEVEN MR ADONIS 96Z
BLACK GOLD MS FLORA 84B
BRINK GERONIMO A310
WOLFE ZAYLEE FF 734Z
DORA LEE NATIVE SON
MFI PETRA 123M
CAMBAR REGENT RAGE 45K
SWANTEWITT 39K

- Good growth rankings.
- Bit of a different pedigree on this guy. His dam came from Swantewitt Simmentals of Peers AB. They are known for their outcross Fullblood genetics.
- Should add milk into his daughters.
- This is one of the first Geyser sons to sell. Geyser has size, growth, and awesome maternal power behind him.

261K**WOLFE KEVLAR FF 261K**

FULLBLOOD 1438994 TWW 261K APR 23, 2022

BW 105
Dec 8/22 W 865
May 15/23 W 1400
CE 1.8 BW 7.5 WW 86.1
YW 122.8 M 31.5
MCE 2.6 MWW 74.6

JNR BOULDER
JNR BALDWIN
JNR TAJSA 475B

BRINK KEVLAR D620
WOLFE FABULOUS FF 261F
WOLFE CORY FF 925C

MFI BAMBAM
JNR SHAMU
KUZ MR APPOLLO 11X
JNR TAJSA 241Z
BRINK BULLET PROOF A34Z
BRINK TARA Z293 ET
ANCHOR D STING 184W
SWANTEWITT TURTLE 77T

- Full Fleckvieh.
- Loose made bull like most of the Baldwin progeny.
- Good temperament.
- Last year's maternal sister (pictured) was our highest-selling female, going to Snowdame Farms, and Alliance Simmental Farms.

Wolfe Java FF 108J maternal sister



**264K****WOLFE KENTON FF 264K**

FULLBLOOD 1438995 TWW 264K APR 26, 2022

BW 106
Dec 8/22 W 675
May 15/23 W 1255
CE 3.7 BW 6.5 WW 83
YW 114.4 M 41.1
MCE 1.4 MWW 82.6

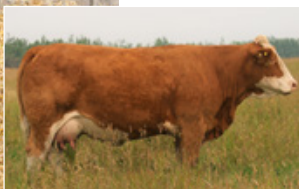
SOUTHSEVEN MR ADONIS 96Z
BLACK GOLD ELEVATION 20E
BLACK GOLD MS FLORA 84B

BRINK GERONIMO A310
WOLFE FELINA FF 264F
WOLFE ANGELINA FF 783A

BLCC MR ADONIS 30X
SOUTH SEVEN MISS 70S
BAR 5 FF HEXAGON 412Y
MFI FLORA 6144
BRINK LEVI X011
BRINK ANITA Y140
ANCHOR D STING 184W
WOLFE MISS FF 607W

- Full Fleckvieh.
- His dam was hurt while raising him, so his weaning weight is on the lower side. But this bull has come on strong since and is a real eye-catcher.
- Very quiet.
- From the Paula cow family (related to Lot 314K).

Wolfe Angelina FF 783A granddam

**266K****WOLFE KRUGER 266K**

PUREBRED G1438819 TWW 266K MAY 2, 2022

BW 106
Dec 8/22 W 855
May 15/23 W 1360

CE 0.4 BW 7.8 WW 87.3
YW 124.8 M 39.3
MCE 0.9 MWW 82.9

ANCHOR D MR GIBBS 20Z
ANCHOR D OZARK 81G
ANCHOR D ADEL 81A

BRINK GERONIMO A310
WOLFE FULDA 266F
WOLFE YULENNY 709Y

BAR 5 SA STRIDE 413P
ANCHOR D TYRA 20T
DOUBLE BAR D INTUITION
ANCHOR D CHERISE 101S
BRINK LEVI X011
BRINK ANITA Y140
ANCHOR D STING 184W
WOLFE MISS 575U

- The Ozark-Geronimo cross is a very good one. Many of the cows selected to go with Ozark this year were Geronimo cows.
- Long body.
- Big square hip.
- Another quiet bull. We think most of this year's bulls are very well-mannered.

**267K****WOLFE KEANU 267K**

FULLBLOOD 1438996 TWW 267K APR 22, 2022

BW 101
Dec 8/22 W 950
May 15/23 W 1500

CE 3.9 BW 5.5 WW 78.2
YW 110.1 M 34.7
MCE 2.7 MWW 73.8

BLACK GOLD CRUDE
VIRGINIA GAGE 34G
SS UNIQUE 34U FF

JNR BROKER
WOLFE FUMIKO 267F
WOLFE CAITLYN 927C

STARWEST BRYCK
PATS JANIS 3W
BAR 5 SA BANKER 833R
SS RIKKI 25R FF
MFI BAMBAM
JNR SHAMU
MFI JAHARI 8154
WOLFE YEDA 708Y

- Full Fleckvieh.
- Ranked 3rd of 83 for AWW and 3rd of 83 for AYW.
- We knew his sire Gage had to come home with us when we noticed he was the highest growth bull in Virginia's offering that year.
- Size and body depth from Gage combined with the thickness of Broker has made this bull very complete.

**268K****WOLFE KELVIN FF 268K**

FULLBLOOD 1438997 TWW 268K APR 17, 2022

BW 100
Dec 8/22 W 825
May 15/23 W 1390

CE 3.8 BW 6.1 WW 79.4
YW 113.3 M 37.6
MCE 3.3 MWW 77.3

BLACK GOLD ELEVATION 20E
WOLFE GEYSER FF 885G
WOLFE CHEYENNE FF 885C

BRINK KEVLAR D620
WOLFE FITZY FF 268F
WOLFE AUSTRALIA FF 810A

SOUTHSEVEN MR ADONIS 96Z
BLACK GOLD MS FLORA 84B
BRINK GERONIMO A310
WOLFE ZAYLEE FF 734Z
BRINK BULLET PROOF A342
BRINK TARA Z293 ET
MFI JAHARI 8154
WOLFE MISS FF 679X

- Full Fleckvieh.
- We still have his 10-year-old granddam.
- His dam is one of our few Kevlar cows. We only used him one year before we lost him.
- Maternal sister was purchased by Bendall Cattle of Ashmont AB.

Wolfe Australia FF 810A granddam





270K

WOLFE KELVAN FF 270K

FULLBLOOD 1438998 TWW 270K APR 18, 2022

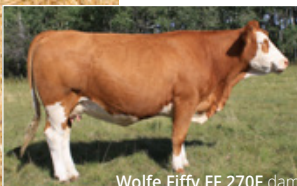
BW 116
Dec 8/22 W 945
May 15/23 W 1490
CE -1 BW 8.3 WW 84.4
YW 123.4 M 37.5
MCE -4 MWW 79.7

FGAF FRENCH ATTACK 010C
FGAF ELECTRIC AVENUE 140E
GIBBONS DORALEE

WOLFES DYNAMITE FF19D
WOLFE FIFFY FF 270F
WOLFE YIFFY 724Y

SIBELLE DIRTY HARRY 25Z
VIRGINIAS JANE WEST
BAR 5 P SA EVOLUTION 418S
DORA LEE'S DUCHESS FF152T
WOLFES THUNDER FF60T
MFI ZAILA 78L
MVS GUNNER 1N
WOLFE MISS 618W

- Full Fleckvieh.
- Awesome growth. Ranked 6th of 83 for both AWW and AYW.
- Deep rear quarter.
- A smooth and very complete bull.
- From one of Courtney's favourite cows. Get some huge steers and be sure to keep his daughters!



Wolfe Fiffy FF 270F dam

279K

WOLFE KOSMO 279K

PUREBRED G1438999 TWW 279K APR 17, 2022

BW 90
Dec 8/22 W 835
May 15/23 W 1390

CE 7.9 BW 4.3 WW 70
YW 102.1 M 42.5
MCE 4.5 MWW 77.5

BLACK GOLD CRUDE
VIRGINIA GAGE 34G
SS UNIQUE 34U FF

DOUBLE BAR D KITIMAT 237B
WOLFE FIDELITY 279F
WOLFE DUSTI 982D

STARWEST BRYCK
PATS JANIS 3W
BAR 5 SA BANKER 833R
SS RIKKI 25R FF

WLSF KAIMAT 930X
DOUBLE BAR D LOLITA 188Z
VIRGINIA BARCELONA 46X
WOLFE BONNIE 871B

- ¾ brother to Lot 212K, one of this years' most growthy bulls.
- This bull also has the Gage size and body length and depth.
- His dam is a very thick made cow. And we still have his great, great granddam 871B.

Double Bar D Kitimat 237B maternal grandsire



284K

WOLFE KEG FF 284K

FULLBLOOD 1438825 TWW 284K MAY 4, 2022

BW 99
Dec 8/22 W 755
May 15/23 W 1185

CE 6.8 BW 4.3 WW 71.7
YW 100.8 M 36.1
MCE 2.4 MWW 72

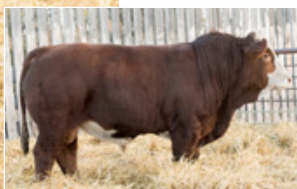
SOUTHSEVEN MR ADONIS 96Z
BLACK GOLD ELEVATION 20E
BLACK GOLD MS FLORA 84B

WOLFES BREWSTER FF78B
WOLFE FLIKA FF 284F
WOLFE AUDRY FF 804A

BLCC MR ADONIS 30X
SOUTH SEVEN MISS 70S
BAR 5 FF HEXAGON 412Y
MFI FLORA 6144
SMITHBILT MOLSON 21M
MFI ZAILA 78L
ANCHOR D STING 184W
WOLFE MISS FF552T

- Full Fleckvieh.
- Moderate framed.
- Very thick and should still calve well.
- His full brother from last year (pictured) sold to repeat buyer Jassman Farms of Spirit River AB.

Wolfe Jubba FF 284J full brother



287K

WOLFE KELOWNA FF 287K

FULLBLOOD 1438822 TWW 287K MAY 4, 2022

BW 102
Dec 8/22 W 810
May 15/23 W 1305

CE 3.8 BW 6.2 WW 78.9
YW 110.7 M 35.8
MCE 2.9 MWW 75.3

BEL C&B WESTERN 2ND
WOLFES BELL FF62F
WOLFES CANDY C138W

VIRGINIA BARCELONA 46X
WOLFE FENDY FF 287F
WOLFE'S WENDY FF 55W

SIM-ROC C&B WESTERN
ADRIAN
BRINK AMOS S621
BHR LADY MARIETTA H264E
CHAMPS ROMANO
ANCHOR "T" BARBI 46K
BAR 5 SA EVAN 440L
BAR 5 SA MALISSA 823N

- Full Fleckvieh.
- Very stylish bull that inherited his sire's great length of body.
- From the highly productive Wendy cow family.
- Last years maternal brother sold to Cedar View Farms of Barhead AB.

Wolfe's Wendy FF55W granddam



**293K****WOLFE KNUCKLE 293K**

PUREBRED G1439000 TWW 293K APR 19, 2022

BW 102
Dec 8/22 W 830
May 15/23 W 1265
CE 4.8 BW 6 WW 81.8
YW 112.2 M 41.4
MCE 2.6 MWW 82.3

SOUTHSEVEN MR ADONIS 96Z
BLACK GOLD ELEVATION 20E
BLACK GOLD MS FLORA 84B

BRINK GERONIMO A310
WOLFE FABBY 293F
WOLFE ABBY 788A

BLCC MR ADONIS 30X
SOUTH SEVEN MISS 70S
BAR 5 FF HEXAGON 412Y
MFI FLORA 6144
BRINK LEVI X011
BRINK ANITA Y140
ANCHOR D STING 184W
WOLFE MISS 685X

- His dam is a beautiful Geronimo daughter following her mother's footsteps.
- Granddam, Abby, was one of Courtney's best 4-H cows.
- Great feet. Keep his daughters.

Wolfe Abby 788A granddam

**295K****WOLFE KEEN 295K**

POLLED PUREBRED PG1438833 TWW 295K MAY 8, 2022

BW 104
Dec 8/22 W 825
May 15/23 W 1345
CE 2 BW 7.1 WW 79.4
YW 118.1 M 36.2
MCE -0.1 MWW 75.9

DOUBLE BAR D CHANDLER 153D
DOUBLE BAR D TRADER 19H
CAR-LAUR CASSANDRA 755C

BRINK GERONIMO A310
WOLFE FANCY 295F
SWANTEWITT CHARM 281Y

DOUBLE BAR D CHANDLER 143
DOUBLE BAR D BARBL 164A
PHS YUKON
SANMAR ROSEBUD 30R
BRINK LEVI X011
BRINK ANITA Y140
TWIN-CHIEF WYOMING 28W
SWANTEWITT CHARM 5P

- Polled.
- This Trader son will and size and muscle while maintaining a solid colour pattern.
- His Swantewitt granddam, 281Y, was an incredibly productive cow.

**298K****WOLFE KINGPIN FF 298K**

FULLBLOOD 1439001 TWW 298K APR 26, 2022

BW 100
Dec 8/22 W 885
May 15/23 W 1475
CE 5.3 BW 5.1 WW 78.3
YW 103.9 M 41.1
MCE 2.3 MWW 80.3

SOUTHSEVEN MR ADONIS 96Z
BLACK GOLD ELEVATION 20E
BLACK GOLD MS FLORA 84B

WOLFES DYNAMITE FF19D
WOLFE FURLEE FF 298F
MOOSE CREEK MS IMAGE 12Z

BLCC MR ADONIS 30X
SOUTH SEVEN MISS 70S
BAR 5 FF HEXAGON 412Y
MFI FLORA 6144
WOLFES THUNDER FF60T
MFI ZAILA 78L
MOOSE CREEK IMAGE 12T
MTN COUNTRY SHARKEY

- Full Fleckvieh.
- Ranked 4th of 83 for adjusted yearling weight.
- Size and bone.
- From a powerful Dynamite daughter. The Dynamite cows have tight udders and raise big calves, a great combo! See lots 19K and 270K for other Dynamite grandsons.
- A full brother is working for Jim Davies of Sundre AB.

302K**WOLFE KUSTER FF 302K**

FULLBLOOD S1438810 TWW 302K APR 30, 2022

BW 95
Dec 8/22 W 780
May 15/23 W 1225
CE 5.4 BW 5.3 WW 77.2
YW 109.8 M 36.2
MCE 3.9 MWW 74.8

SOUTHSEVEN MR ADONIS 96Z
BLACK GOLD ELEVATION 20E
BLACK GOLD MS FLORA 84B

BRINK CUSTER E773
WOLFE GECKO FF 302G
WOLFE CORY FF 925C

BLCC MR ADONIS 30X
SOUTH SEVEN MISS 70S
BAR 5 FF HEXAGON 412Y
MFI FLORA 6144
BRINK FLEX C516
BRINK CAROL C510
ANCHOR D STING 184W
SWANTEWITT TURTLE 77T

- Full Fleckvieh, scur polled.
- Very well-balanced and hard to fault.
- His young dam was one of our best-looking heifers that year and his granddam is a great producing cow Turtle daughter. This cow family has a lot of longevity.
- Maternal sister was purchased last year by Short Grass Farms of Debolt AB.

Wolfe Cory FF 925C granddam





303K

WOLFE KEYSER FF 303K

FULLBLOOD 1438838 TWW 303K MAY 10, 2022

BW 102
Dec 8/22 W 800
May 15/23 W 1185
CE 4.4 BW 5.2 WW 73.1
YW 100 M 42.8
MCE 3 MWW 79.4

BLACK GOLD ELEVATION 20E
WOLFE GEYSER FF 885G
WOLFE CHEYENNE FF 885C

SWANTEWITT DRIVER 287Y
SWANTEWITT BEZITA 303B
SWANTEWITT RAIN 174 R

SOUTHSEVEN MR ADONIS 96Z
BLACK GOLD MS FLORA 84B
BRINK GERONIMO A310
WOLFE ZAYLEE FF 734Z
DORA LEE NATIVE SON
MFI PETRA 123M
MFI VISION 3078
SWANTEWITT MARIS 65M

- Full Fleckvieh.
- Great length of spine.
- Lots of hair.
- Be sure to check out his video.
- Dam is one of our older cows and has a unique pedigree. She also still has a great udder.

309K

WOLFE KOEN 309K

PUREBRED G1438831 TWW 309K MAY 8, 2022

BW 93
Dec 8/22 W 740
May 15/23 W 1225
CE 1 BW 6.5 WW 83.8
YW 117.1 M 42.2
MCE 1.2 MWW 84.1

ANCHOR D MR GIBBS 20Z
ANCHOR D OZARK 81G
ANCHOR D ADEL 81A

BRINK GERONIMO A310
WOLFE GALA 309G
WOLFE BRIETTA 843B

BAR 5 SA STRIDE 413P
ANCHOR D TYRA 20T
DOUBLE BAR D INTUITION
ANCHOR D CHERISE 101S
BRINK LEVI X011
BRINK ANITA Y140
SKORS CROCKET 32Y
WOLFE MISS 496S

- This combination of Ozark from a Geronimo cow is the same one that produced one of last year's heavyweights, 296J.
- Should add lots of length and muscle to your steers to get those dividends.
- Dam is a broody cow.

Wolfe Gala 309G dam



314K

WOLFE KANNON FF 314K

FULLBLOOD 1439002 TWW 314K APR 26, 2022

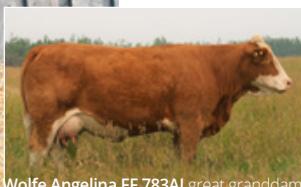
BW 91
Dec 8/22 W 690
May 15/23 W 1340
CE 4.7 BW 6.1 WW 76.3
YW 106.5 M 33
MCE 3.6 MWW 71.2

BEL C&B WESTERN 2ND
WOLFES BELL FF62F
WOLFES CANDY C138W

DOUBLE BAR D KITIMAT 237B
WOLFE GOSHA FF 313G
WOLFE ELSHA FF 213E

SIM-ROC C&B WESTERN
ADRIAN
BRINK AMOS S621
BHR LADY MARIETTA H264E
WLSF KAIMAT 930X
DOUBLE BAR D LOLITA 188Z
BRINK GERONIMO A310
WOLFE ANGELINA FF 783A

- Full Fleckvieh.
- Very soggy made and good length.
- Dam is from the Paula cow family. She had one of the best ultrasound scans of all our G replacements (5th largest ribeye and 2nd largest marbling score).
- Maternal brother to Hudson, a Sully son we kept and bred most of our sale heifers to.
- Twin to a bull.



Wolfe Angelina FF 783A great granddam

317K

WOLFE KOLT 317K

PUREBRED G1439003 TWW 317K APR 25, 2022

BW 93
Dec 8/22 W 760
May 15/23 W 1335
CE 2.6 BW 5.7 WW 87.5
YW 127.4 M 44.8
MCE 2.3 MWW 88.6

ANCHOR D MR GIBBS 20Z
ANCHOR D OZARK 81G
ANCHOR D ADEL 81A

BRINK GERONIMO A310
WOLFE GRANJA 317G
WOLFE DESSERT 963D

BAR 5 SA STRIDE 413P
ANCHOR D TYRA 20T
DOUBLE BAR D INTUITION
ANCHOR D CHERISE 101S
BRINK LEVI X011
BRINK ANITA Y140
VIRGINIA BARCELONA 46X
WOLFE BROWNIE 882B

- Very strong footed.
- A typical Ozark son. Lots of muscle in a moderate frame.
- From the same cow family as Lot 963K.



**320K****WOLFE KAVALRY FF 320K**

FULLBLOOD 1439004 TWW 320K APR 25, 2022

BW 91
Dec 8/22 W 830
May 15/23 W 1415
CE 5.7 BW 5 WW 78.8
YW 110.4 M 41.7
MCE 3.4 MWW 81.1

SOUTHSEVEN MR ADONIS 96Z
BLACK GOLD ELEVATION 20E
BLACK GOLD MS FLORA 84B

BRINK GERONIMO A310
WOLFE GUMDROP FF 320G
WOLFE CANDY FF 920C

BLCC MR ADONIS 30X
SOUTH SEVEN MISS 70S
BAR 5 FF HEXAGON 412Y
MFI FLORA 6144
BRINK LEVI X011
BRINK ANITA Y140
CLEARWATER ANDY
WOLFE ANGEL FF 818A

- Full Fleckvieh.
- Great growth and a smaller birthweight.
- Larger frame size.

Black Gold Ms Flora 84B paternal granddam

322K**WOLFE KRUIZ 322K**

PUREBRED G1438830 TWW 322K MAY 7, 2022

BW 94
Dec 8/22 W 785
May 15/23 W 1335
CE 1.3 BW 6.9 WW 88.5
YW 126.3 M 42
MCE 1.6 MWW 86.3

ANCHOR D MR GIBBS 20Z
ANCHOR D OZARK 81G
ANCHOR D ADEL 81A

BRINK GERONIMO A310
WOLFE GUINEVERE 322G
WOLFE DENYCE 947D

BAR 5 SA STRIDE 413P
ANCHOR D TYRA 20T
DOUBLE BAR D INTUITION
ANCHOR D CHERISE 101S
BRINK LEVI X011
BRINK ANITA Y140
VIRGINIA BARCELONA 46X
WOLFE BERNYCE 858B

- An attractive Ozark son.
- We can't get enough of this Ozark-Geronimo combo!
- Walks very freely.
- We still have his great granddam, a coming 10-year-old.

**330K****WOLFE KOZARK FF 330K**

FULLBLOOD 1438806 TWW 330K APR 30, 2022

BW 94
Dec 8/22 W 895
May 15/23 W 1440
CE 3.6 BW 5.5 WW 82.4
YW 114.1 M 43.1
MCE 2.6 MWW 84.3

ANCHOR D MR GIBBS 20Z
ANCHOR D OZARK 81G
ANCHOR D ADEL 81A

BLACK GOLD ELEVATION 20E
WOLFE GAIL FF 330G
KHG DEANNA 69D

BAR 5 SA STRIDE 413P
ANCHOR D TYRA 20T
DOUBLE BAR D INTUITION
ANCHOR D CHERISE 101S
SOUTHSEVEN MR ADONIS 96Z
BLACK GOLD MS FLORA 84B
NUG COLUMBUS 74B
SALMON ARM ELDI 7Y

- Full Fleckvieh.
- Ranked 4th of 83 for AWW and 5th of 83 for AYW.
- Extremely quiet temperament. Excellent feet.
- Granddam, 69D, is one of our favourites and her daughters are becoming top producers. One of our thickest bull calves this year is from his dam's maternal sister, 289F.

333K**WOLFE KENNY FF 333K**

FULLBLOOD 1438843 TWW 333K MAY 12, 2022

BW 95
Dec 8/22 W 710
May 15/23 W 1190
CE 6.1 BW 5 WW 70.8
YW 94.8 M 38.9
MCE 4.8 MWW 74.3

BEL C&B WESTERN 2ND
WOLFES BELL FF62F
WOLFES CANDY C138W

DOUBLE BAR D KITIMAT 237B
WOLFE GRECHEN FF 333G
WOLFE EGYPT FF 203E

SIM-ROC C&B WESTERN
ADRIAN
BRINK AMOS S621
BHR LADY MARIETTA H264E
WLSF KAIMAT 930X
DOUBLE BAR D LOLITA 188Z
VIRGINIA BARCELONA 46X
WOLFE CLEOPATRA FF 929C

- Full Fleckvieh.
- Very loose and deep Bell son.
- Last year's maternal brother was purchased by Perepelkin Farms of Condor AB.



**337K****WOLFE KRACKEN FF 337K**

FULLBLOOD 1439005 TWW 337K APR 22, 2022

BW 101
Dec 8/22 W 720
May 15/23 W 1250
CE 4.2 BW 5.3 WW 78.6
YW 113.7 M 37.1
MCE 3.1 MWW 76.4

BLACK GOLD CRUDE
VIRGINIA GAGE 34G
SS UNIQUE 34U FF

JNR BROKER
WOLFE GINNY FF 337G
WOLFE MISS FF 669X

STARWEST BRYCK
PATS JANIS 3W
BAR 5 SA BANKER 833R
SS RIKKI 25R FF
MFI BAMBAM
JNR SHAMU
WOLFE STEIGER FF 32S
WOLFE MANDY FF 43M

- Full Fleckvieh.
- One of our poster-boys. Size from Gage and thickness from Broker. A very well balanced bull.
- Granddam 669X lived to be 11 years old.
- Daughters from this cow family working for both Keato Meadow Simmentals and JNR Farms.

Wolfe Miss FF 669X granddam

**339K****WOLFE KAL 339K**

FULLBLOOD 1439006 TWW 339K APR 28, 2022

BW 93
Dec 8/22 W 855
May 15/23 W 1355
CE 4 BW 5.5 WW 82.1
YW 115.2 M 33
MCE 3.4 MWW 74.1

JNR BOULDER
JNR BALDWIN
JNR TAJSA 475B

BRINK GERONIMO A310
WOLFE GRETTEL 339G
WOLFE YEDA 708Y

MFI BAMBAM
JNR SHAMU
KUZ MR APPOLLO 11X
JNR TAJSA 241Z
BRINK LEVI X011
BRINK ANITA Y140
SWANTEWITT LAKOTA 2P
WOLFE MISS 567T

- Good growth rankings.
- His granddam Yeda is one of our oldest cows. We are very happy her last two calves have been heifers.

Wolfe Yeda 708Y granddam

**341K****WOLFE KODIAK 341K**

PUREBRED G1438847 TWW 341K MAY 16, 2022

BW 104
Dec 8/22 W 780
May 15/23 W 1285
CE 4.2 BW 6.5 WW 84
YW 117.2 M 42.6
MCE 2.2 MWW 84.6

SOUTHSEVEN MR ADONIS 96Z
BLACK GOLD ELEVATION 20E
BLACK GOLD MS FLORA 84B

BRINK GERONIMO A310
WOLFE GLITZ 341G
WOLFE BLITZ 852B

BLCC MR ADONIS 30X
SOUTH SEVEN MISS 70S
BAR 5 FF HEXAGON 412Y
MFI FLORA 6144
BRINK LEVI X011
BRINK ANITA Y140
VIRGINIA BARCELONA 46X
WOLFE MISS 569T

- This calf was one of our favourites last Summer.
- Good growth.
- Elevation on Geronimo cows is another proven combo. Many of last years highsellers were $\frac{3}{4}$ brothers.
- From a dam that's becoming a top cow.

344K**WOLFE KERNEL 344K**

PUREBRED G1438816 TWW 344K MAY 2, 2022

BW 93
Dec 8/22 W 750
May 15/23 W 1253
CE 6.1 BW 5.6 WW 74.8
YW 101.1 M 36.2
MCE 3.9 MWW 73.6

JNR'S SALTON
RWR SULLY 9E
IPU MS. ROWEENA 204X

BRINK CUSTER E773
WOLFE HELENA 344H
WOLFE DEKA 949D

FGAF SELDOM 835L
JNR'S MARGO 2ND
CHAMPS ROMANO
K&S ROSALIND 45R
BRINK FLEX C516
BRINK CAROL C510
BRINK GERONIMO A310
WILY APRIL 2A

- Lots of body depth in his pedigree.
- He resembles his maternal grandsire Custer- spring of rib, body mass and a good thick hair coat.
- Dam is a maternal sister to one of our top bulls on offer, Lot 949K.



**347K****WOLFE KITIMAT FF 347K**

FULLBLOOD 1439008 TWW 347K APR 20, 2022

BW 87
Dec 8/22 W 775
May 15/23 W 1231
CE 10.9 BW 2.3 WW 56.5
YW 77.8 M 40.5
MCE 5.4 MWW 68.8

WLSF KAIMAT 930X
DOUBLE BAR D KITIMAT 237B
DOUBLE BAR D LOLITA 188Z

BLACK GOLD ELEVATION 20E
WOLFE HARRIET FF 347H
WOLFE CINDERELLA FF 915C

WLSF KAUNLO
SALMON ARM SOBI 29R
RV NICKELBACK 6U
MFI LOLITA 4010
SOUTHSEVEN MR ADONIS 96Z
BLACK GOLD MS FLORA 84B
BRINK GERONIMO A310
WOLFE MISS FF 669X

- Full Fleckvieh.
- Probably the best heifer bull prospect on offer.
- His sire Kitimat was used in the heifer pen for seven years and his maternal grandsire Elevation is known for his moderate birthweights. This is the only Full-blood Kitimat son on offer.
- Long bodied.
- Dam is a daughter of our beautiful Cinderella cow.



Wolfe Cinderella FF 915C granddam

351K**WOLFE KODY 351K**

PUREBRED G1439009 TWW 351K APR 9, 2022

BW 87
Dec 8/22 W 760
May 15/23 W 1255
CE 7.2 BW 4 WW 72.8
YW 98.9 M 35.6
MCE 4 MWW 72

JNR'S SALTON
RWR SULLY 9E
IPU MS. ROWEENA 204X

BRINK GERONIMO A310
WOLFE HADLEE 351H
WOLFE ELEXIS 230E

FGAF SELDOM 835L
JNR'S MARGO 2ND
CHAMPS ROMANO
K&S ROSALIND 45R
BRINK LEVI X011
BRINK ANITA Y140
DOUBLE BAR D AERO 298B
WOLFE ALEXIS 778A

- These next several lots are out of first-calf heifers.
- Another thick Sully son.
- Possible heifer bull. One of the smallest birthweights of the group.
- His granddam, 230E (pictured) is one of our best-looking cows.

Wolfe Elexis 230E granddam

**361K****WOLFE KOMMANDER FF 361K**

FULLBLOOD 1439010 TWW 361K APR 12, 2022

BW 95
Dec 8/22 W 870
May 15/23 W 1345
CE 7.5 BW 5 WW 71.6
YW 97.4 M 36.2
MCE 5.1 MWW 72

JNR'S SALTON
RWR SULLY 9E
IPU MS. ROWEENA 204X

BRINK CUSTER E773
WOLFE HEIDI FF 361H
WOLFE ZARIA FF 746Z

FGAF SELDOM 835L
JNR'S MARGO 2ND
CHAMPS ROMANO
K&S ROSALIND 45R
BRINK FLEX C516
BRINK CAROL C510
VIRGINIA BARCELONA 46X
WOLFE MISS FF 599U

- Full Fleckvieh.
- Deep like his sire.
- Strong maternal power in his pedigree.
- We still have his 11-year-old granddam, a Jillian granddaughter.

**365K****WOLFE KOB 365K**

PUREBRED G1438818 TWW 365K MAY 2, 2022

BW 90
Dec 8/22 W 690
May 15/23 W 1195
CE 6.9 BW 5 WW 61.5
YW 87.3 M 35.8
MCE 4 MWW 66.6

WLSF KAIMAT 930X
DOUBLE BAR D KITIMAT 237B
DOUBLE BAR D LOLITA 188Z

BRINK CUSTER E773
WOLFE HANSI 365H
WOLFE ZILLY 755Z

WLSF KAUNLO
SALMON ARM SOBI 29R
RV NICKELBACK 6U
MFI LOLITA 4010
BRINK FLEX C516
BRINK CAROL C510
MFI JAHARI 8154
WOLFE MISS 606W

- We finally retired his sire Kitimat this year, at age 9.
- One of just two Kitimat sons in this year's sale.
- From the Tilly cow family. Lots of thickness comes from this line.

Wolfe Zilly 755Z granddam



**375K****WOLFE KAZOO FF 375K**

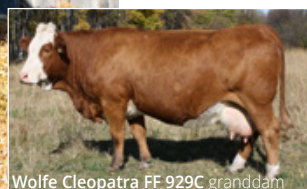
FULLBLOOD 1438859 TWW 375K JUNE 6, 2022

BW 90
Dec 8/22 W 640
May 15/23 W 1050
CE 7.9 BW 4.1 WW 70.4
YW 96 M 37.3
MCE 4.4 MWW 72.5

JNR'S SALTON
RWR SULLY 9E
IPU MS. ROWEENA 204X

JNR BROKER
WOLFE HULDAH FF 375H
WOLFE CLEOPATRA FF 929C

FGAF SELDOM 835L
JNR'S MARGO 2ND
CHAMPS ROMANO
K&S ROSALIND 45R
MFI BAMBAM
JNR SHAMU
BRINK GERONIMO A310
WOLFE MISS FF 558T



Wolfe Cleopatra FF 929C granddam

- Full Fleckvieh.
- One of the youngest bulls in the sale.
- Moderate, hard to fault.
- We co-own his sire Sully with Lone Stone Farms of Westlock AB. We have both been very happy with him and his progeny.
- Goes back to the muscled Cleopatra cow (pictured).

379K**WOLFE KELLER 379K**

PUREBRED G1439011 TWW 379K APR 12, 2022

BW 80
Dec 8/22 W 750
May 15/23 W 1295
CE 8.1 BW 2.9 WW 61.5
YW 81.8 M 32.1
MCE 3.3 MWW 62.9

JNR'S SALTON
RWR SULLY 9E
IPU MS. ROWEENA 204X

DOUBLE BAR D AERO 298B
WOLFE HAIKU 379H
WOLFE BEAUTY 854B

FGAF SELDOM 835L
JNR'S MARGO 2ND
CHAMPS ROMANO
K&S ROSALIND 45R
WLSF ABESLY
PROSTOCK GRETCHEN 257Y
SKORS CROCKET 32Y
WOLFE MISS 594U

- Smallest birthweight bull on offer.
- Finer boned.
- Heifer pen prospect.

Double Bar D Aero 298B maternal grandsire

**788K****WOLFE KIP 788K**

PUREBRED G1438821 TWW 788K MAY 4, 2022

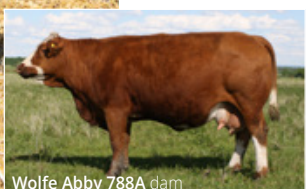
BW 104
Dec 8/22 W 815
May 15/23 W 1300
CE 3.4 BW 6.2 WW 79.1
YW 104.6 M 37.3
MCE 2.6 MWW 76.9

BEL C&B WESTERN 2ND
WOLFES BELL FF62F
WOLFES CANDY C138W

ANCHOR D STING 184W
WOLFE ABBY 788A
WOLFE MISS 685X

SIM-ROC C&B WESTERN
ADRIAN
BRINK AMOS S621
BHR LADY MARIETTA H264E
DOUBLE BARD MAKE M PLLED
MS DD&E STAR GAZER 21B
DSLS DEVAN FF 51T
WOLFE MISS 427R

- His dam Abby was one of Courtney's best 4-H cows and she still looks good at ten years old. We have registered all eight of her calves, with another about to be weaned.
- Long like most Bell offspring. Length adds more pounds than you think.
- Maternal brother 788H was a highseller going to South Peace Colony of Dawson Creek AB.



Wolfe Abby 788A dam

811K**WOLFE KLARK 811K**

PUREBRED G1439012 TWW 811K APR 26, 2022

BW 107
Dec 8/22 W 830
May 15/23 W 1365
CE 5.5 BW 4.9 WW 78
YW 116.9 M 44.1
MCE 2.3 MWW 83.1

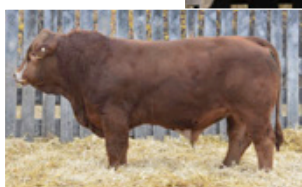
BLACK GOLD ELEVATION 20E
WOLFE GEYSER FF 885G
WOLFE CHEYENNE FF 885C

LFE RRS LEWIS 378W
WOLFE AKITA 811A
WOLFE YORELA 717Y

SOUTHSEVEN MR ADONIS 96Z
BLACK GOLD MS FLORA 84B
BRINK GERONIMO A310
WOLFE ZAYLEE FF 734Z
KS BRAVADO P68
RRS DESI 202T
MFI JAHARI 8154
WOLFE MISS 597U

- Pay attention to the year letters, these next several lots are out of some of our oldest and proven dams.
- This guy has a ton of frame!
- 811K's dam is a cow that always brings home a big calf. We have registered all but one of her calves.

Wolfe Jacinto 811J maternal brother





Wolfe Brandy FF 836B
dam at 8 years old



MFI Jahari 8154
maternal grandsire

836K

WOLFE KASLO FF 836K

FULLBLOOD S1439013 TWW 836K APR 24, 2022

BW 105
Dec 8/22 W 940
May 15/23 W 1395
CE 0.6 BW 6.8 WW 78.6
YW 111.9 M 34.5
MCE -2 MWW 73.8

FGAF FRENCH ATTACK 010C
FGAF ELECTRIC AVENUE 140E
GIBBONS DORALEE

MFI JAHARI 8154
WOLFE BRANDY FF 836B
WOLFE MISS 366P

SIBELLE DIRTY HARRY 25Z
VIRGINIAS JANE WEST
BAR 5 P SA EVOLUTION 418S
DORA LEE'S DUCHESS FF152T
SHAWACRES JAHARI 50L
MFI PETRA 2059
JACK PINE ANDY II FF1J
WOLFE MINA 54M

- Full Fleckvieh, scur polled.
- Kaslo has been a top contender since he was just a few weeks old. Ranked 5th of 83 for AWW. He also stood out all Winter when on a high forage diet.
- His dam is aging beautifully, and we think she is one of our best cows.
- In 2021 Eddy Klassen and Dwayne & Kyra Patterson of Debolt AB purchased Kaslo's full brother as one of our highsellers.
- **Half interest of this bull is on offer.** Our new partner will be able to use Kaslo outside of our breeding season, which is approx. July 1 – Sept 15.

854K

WOLFE KADILLAC FF 854K

FULLBLOOD 1438834 TWW 854K MAY 8, 2022

BW 94
Dec 8/22 W 830
May 15/23 W 1280
CE 3.4 BW 5.3 WW 81.2
YW 113.9 M 41.5
MCE 0.6 MWW 82.1

FGAF FRENCH ATTACK 010C
FGAF ELECTRIC AVENUE 140E
GIBBONS DORALEE

BEE DUCATI 191D
PARVIEW MS ADELA 854F
PARVIEW MS ADELA 667D

SIBELLE DIRTY HARRY 25Z
VIRGINIAS JANE WEST
BAR 5 P SA EVOLUTION 418S
DORA LEE'S DUCHESS FF152T
ANCHOR D MAZOROTTI 19B
ANCHOR D BLAIR 191B
JB CDN WIND WALKER 110Z
JNR ADELA

- Full Fleckvieh.
- Made top 10 for adjusted weaning weight.
- Has four dark red, very correct feet.
- Has a ton of hair.
- Dam was purchased from the Fleckvieh Equation Sale.



885J**WOLFE INVESTOR FF 885J**

FULLBLOOD 1381192 TWW 885J NOV 2, 2021

BW 111
Apr 19/22 W 860
Sept 30/22 W 1315
CE 0.7 BW 7.9 WW 88.1
YW 122.6 M 38.2
MCE 1 MWW 82.3

MFI BAMBAM
JNR BROKER
JNR SHAMU

BRINK GERONIMO A310
WOLFE CHEYENNE FF 885C
WOLFE ZAYLEE FF 734Z

SHAWACRES JAHARI 50L
MFI LOLITA 3107
BEL C&B WESTERN 2ND
KNIGHTS SHYANN 125B
BRINK LEVI X011
BRINK ANITA Y140
VIRGINIA BARCELONA 46X
WOLFE'S WENDY FF 55W

- Full Fleckvieh.
- Powerful pedigree and confirmation. Tremendous muscle from his rear all the way through his topline.
- An extra age calf from our first-ever donor cow Cheyenne, a Wendy granddaughter.
- Maternal brother to our walking herdsire, Geyser, whom we share with Whitewood Ranch of Fort Kent AB.
- Resembles his sire, whom we co-owned with Keato Meadow Simmentals.



Wolfe Cheyenne FF 885C dam at 8 years old

904K**WOLFE KASPER 904K**

POLLED FULLBLOOD P1438814 TWW 904K MAY 1, 2022

BW 106
Dec 8/22 W 875
May 15/23 W 1360
CE 0.3 BW 7.2 WW 81.8
YW 114.6 M 37
MCE -2.4 MWW 77.9

FGAF FRENCH ATTACK 010C
FGAF ELECTRIC AVENUE 140E
GIBBONS DORALEE

MFI JAHARI 8154
WOLFE QUINCEE 904C
WOLFE MISS 586U

SIBELLE DIRTY HARRY 25Z
VIRGINIAS JANE WEST
BAR 5 P SA EVOLUTION 418S
DORA LEE'S DUCHESS FF152T
SHAWACRES JAHARI 50L
MFI PETRA 2059
ANCHOR D MESSIAH 87R
SWANTEWITT TIFFANY ONE98H

- Polled.
- The Avenue sons impress us each year with their size and muscle.
- $\frac{3}{4}$ brother to Lot 836K at the top of the page, a bull we are selling half interest in.
- Dam has a very tight udder for her age. One of our poster boys, Lot 109K, is from the same cow line.



Wolfe Quincee 904C dam

**911K****WOLFE KAPTAIN FF 911K**

FULLBLOOD 1438836 TWW 911K MAY 10, 2022

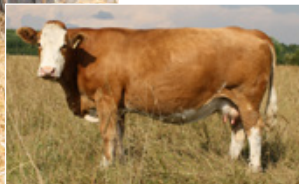
BW 105
Dec 8/22 W 830
May 15/23 W 1390
CE 2 BW 6.8 WW 75.9
YW 104.5 M 27.9
MCE 1.3 MWW 65.9

JNR BOULDER
JNR BALDWIN
JNR TAJSA 475B

MFI JAHARI 8154
WOLFE CECILE FF 911C
WOLFE MISS 633X

MFI BAMBAM
JNR SHAMU
KUJ MR APOLLO 11X
JNR TAJSA 241Z
SHAWACRES JAHARI 50L
MFI PETRA 2059
SWANTEWITT BUSTER 88T
T&L SECILE 15H

- Full Fleckvieh.
- Good growth.
- We featured this guy and his dam on social media last Summer.
- His eight-year-old dam still has a great, tidy udder.



Wolfe Cecile FF 911C dam

935K**WOLFE KOKANEE 935K**

PUREBRED G1438803 TWW 935K APR 27, 2022

BW 98
Dec 8/22 W 830
May 15/23 W 1390
CE 5.2 BW 5.2 WW 74
YW 106 M 43.5
MCE 1.1 MWW 80.5

BLACK GOLD ELEVATION 20E
WOLFE GEYSER FF 885G
WOLFE CHEYENNE FF 885C

WOLFES BREWSTER FF78B
WOLFE DELTA 935D
WOLFE MISS 641X

SOUTHSEVEN MR ADONIS 96Z
BLACK GOLD MS FLORA 84B
BRINK GERONIMO A310
WOLFE ZAYLEE FF 734Z
SMITHBILT MOLSON 21M
MFI ZAILA 78L
DLS DEVAN FF 51T
WOLFE MISS 386P

- Lots of size and frame to add pounds to your calves.
- Dam was one of Courtney's Pen of Three 4-H heifers and she is now a top producer. All of her calves have been registered. She has had four very good bulls in a row, and we can't wait for her to finally have another heifer. This year she was the second cow to calve- fertility!

Wolfe Joyride 935J maternal brother





944K

WOLFE KENZO FF 944K

FULLBLOOD 1439018 TWW 944K MAY 5, 2022

BW 104
Dec 8/22 W 785
May 15/23 W 1240
CE 2.4 BW 7 WW 77.1
YW 107.3 M 32.3
MCE 2.7 MWW 70.9

JNR BOULDER
JNR BALDWIN
JNR TAJSA 475B

WOLFES BREWSTER FF78B
WOLFE DUTCHESS FF 944D
MOOSE-CREEK PRINCESS 225R

MFI BAMBAM
JNR SHAMU
KUZ MR APPOLLO 11X
JNR TAJSA 241Z
SMITHBILT MOLSON 21M
MFI ZAILA 78L
VIRGINIA'S MICHIGAN 627M
MOOSE-CREEK MONIQUE 67M

- Full Fleckvieh.
- Longevity on the bottom side of the pedigree. Brewster's dam produced until she was 14 years old. And his other granddam 225R retired at an old age as well.
- Granddam was purchased from Moose Creek's dispersal.

945K

WOLFE KANGO 945K

PUREBRED G1439019 TWW 945K APR 15, 2022

BW 100
Dec 8/22 W 840
May 15/23 W 1320
CE 3.1 BW 5 WW 81.6
YW 119.6 M 36.8
MCE -0.8 MWW 77.6

FGAF FRENCH ATTACK 010C
FGAF ELECTRIC AVENUE 140E
GIBBONS DORALEE

ANCHOR D STING 184W
WOLFE DANCER 945D
WOLFE MISS 580U

SIBELLE DIRTY HARRY 25Z
VIRGINIAS JANE WEST
BAR 5 P SA EVOLUTION 418S
DORA LEE'S DUCHESS FF152T
DOUBLE BARD MAKE M PLLED
MS DD&E STAR GAZER 21B
WOLFE STEIGER FF 325
WOLFE MISS 432R

- His dam has been a good and productive producer. We have registered all 5 of her calves. She has a super udder.
- Will make good steers and replacements.



Anchor D Sting 184W maternal grandsire



946K

WOLFE KAYTON 946K

PUREBRED G1438835 TWW 946K MAY 9, 2022

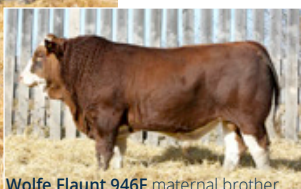
BW 101
Dec 8/22 W 765
May 15/23 W 1350
CE 8 BW 3.3 WW 74.5
YW 106.5 M 37
MCE 4.3 MWW 74.3

SOUTHSEVEN MR ADONIS 96Z
BLACK GOLD ELEVATION 20E
BLACK GOLD MS FLORA 84B

MFI JAHARI 8154
WOLFE DAYTON 946D
WOLFE ZAPHIRE 767Z

BLCC MR ADONIS 30X
SOUTH SEVEN MISS 70S
BAR 5 FF HEXAGON 412Y
MFI FLORA 6144
SHAWACRES JAHARI 50L
MFI PETRA 2059
MVS GUNNER 1N
WOLFE XYLA 648X

- His dam was one of our favourite heifers that year. She is a granddaughter of one of Courtney's first 4-H cows. Her first calf (946K's maternal brother, pictured) was one of our thickest that year too.
- Our Jahari cows are getting up there in age but are aging beautifully. In 2021 out two lead-off bulls were out of Jahari dams. Lot 836K, which we are selling half interest in, is also from a Jahari cow.



Wolfe Flaunt 946F maternal brother

947K

WOLFE KANYE 947K

PUREBRED G1438845 TWW 947K MAY 13, 2022

BW 92
Dec 8/22 W 705
May 15/23 W 1205
CE 8.3 BW 4 WW 73.3
YW 104.4 M 39.7
MCE 4.4 MWW 76.4

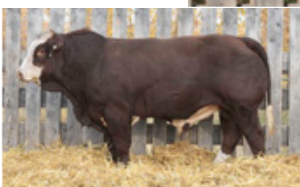
SOUTHSEVEN MR ADONIS 96Z
BLACK GOLD ELEVATION 20E
BLACK GOLD MS FLORA 84B

VIRGINIA BARCELONA 46X
WOLFE DENYCE 947D
WOLFE BERNYCE 858B

BLCC MR ADONIS 30X
SOUTH SEVEN MISS 70S
BAR 5 FF HEXAGON 412Y
MFI FLORA 6144
CHAMPS ROMANO
ANCHOR "T" BARBI 46K
SKORS CROCKET 32Y
WOLFE MISS 601U

- Heifer bull prospect. His maternal grandsire Barcelona was used in our heifer pen for seven years and his sire Elevation is known for his moderate birthweights.
- Last year's 3/4 brother (pictured) was purchased by Cedar View Farms of Barhead AB for their heifer pen.

Wolfe Julius FF 287J 3/4 brother



**949K****WOLFE KEYSTONE 949K**

PUREBRED G1439069 TWW 949K APR 27, 2022

BW 107
Dec 8/22 W 1020
May 15/23 W 1465
CE -0.7 BW 7.8 WW 92.7
YW 129.8 M 42.7
MCE -0.2 MWW 89.1

ANCHOR D MR GIBBS 20Z
ANCHOR D OZARK 81G
ANCHOR D ADEL 81A

BRINK GERONIMO A310
WOLFE DEKA 949D
WILY APRIL 2A

BAR 5 SA STRIDE 413P
ANCHOR D TYRA 20T
DOUBLE BAR D INTUITION
ANCHOR D CHERIE 101S
BRINK LEVI X011
BRINK ANITA Y140
SKORS CROCKET 32Y
WOLFE MISS 651X

- A true standout.
- Very powerful Ozark son. Ranked 1st of 83 for AWW and 7th of 83 for AYW.
- Tremendous body mass will make you some heavy steer calves.

952K**WOLFE KRYPTO 952K**

PUREBRED G1439020 TWW 952K APR 21, 2022

BW 112
Dec 8/22 W 825
May 15/23 W 1290
CE 0.1 BW 8.4 WW 77.3
YW 113.2 M 35.2
MCE -1.8 MWW 73.9

DOUBLE BAR D CHANDLER 153D
DOUBLE BAR D TRADER 19H
CAR-LAUR CASSANDRA 755C

BRINK GERONIMO A310
WOLFE DELICIOUS 952D
WOLFE APPLE 826A

DOUBLE BAR D CHANDLER 143
DOUBLE BAR D BARBL 164A
PHS YUKON
SANMAR ROSEBUD 30R
BRINK LEVI X011
BRINK ANITA Y140
ANCHOR D STING 184W
WOLFE MISS 563T

- One of the first Trader sons to sell. We liked his first group of calves so much we put him with our largest cow breeding group last year.
- The Traders all have a similar muscle pattern thus far.
- We bred his dam to Trader again and were lucky to get twin bulls. We adopted one onto another cow and they both look awesome.

Double Bar D Chandler 153D paternal grandsire

**963K****WOLFE KOMMERCE 963K**

PUREBRED G1438805 TWW 963K APR 29, 2022

BW 95
Dec 8/22 W 860
May 15/23 W 1390
CE 2.9 BW 5.8 WW 88.1
YW 129.2 M 40
MCE 2.3 MWW 84.1

DOUBLE BAR D CHANDLER 153D
DOUBLE BAR D TRADER 19H
CAR-LAUR CASSANDRA 755C

VIRGINIA BARCELONA 46X
WOLFE DESSERT 963D
WOLFE BROWNIE 882B

DOUBLE BAR D CHANDLER 143
DOUBLE BAR D BARBL 164A
PHS YUKON
SANMAR ROSEBUD 30R
CHAMPS ROMANO
ANCHOR "T" BARBI 46K
MVS GUNNER 1N
WOLFE ZOLEEN 777Z

- This is one of the larger Trader sons to sell.
- Big square hip.
- Last year's maternal brother (pictured) was one of our lead-off bulls.

Wolfe Jacked 963J maternal brother

**972K****WOLFE KARBON 972K**

PUREBRED G1438840 TWW 972K MAY 11, 2022

BW 104
Dec 8/22 W 760
May 15/23 W 1295
CE 0.5 BW 7.3 WW 82.6
YW 115.6 M 36.5
MCE -3.5 MWW 77.8

WOLFES THUNDER FF60T
WOLFES DYNAMITE FF19D
MFI ZAILA 78L

VIRGINIA BARCELONA 46X
WOLFE DAELYN 972D
WOLFE BIANCA 875B

BAR 5 SA EVAN 440L
BAR 5 SA MALISSA 823N
HAXENT
MFL ZAILA 8Z
CHAMPS ROMANO
ANCHOR "T" BARBI 46K
SKORS CROCKET 32Y
WOLFE YALENE 725Y

- Strong footed.
- With Dynamite as his sire, he should make good replacement heifers. See lots 19K and 270K for other Dynamite grandsons.
- A few years back his dam raised our thickest heifer calf, 385H.

MFI Zaila 78L paternal granddam



**976K****WOLFE KEROSENE 976K**

PUREBRED G1438828 TWW 976K MAY 6, 2022

BW 117
Dec 8/22 W 865
May 15/23 W 1270
CE -2.6 BW 9.1 WW 86.8
YW 120.3 M 39.4
MCE -5.4 MWW 82.8

WOLFES THUNDER FF60T
WOLFES DYNAMITE FF19D
MFI ZAILA 78L

BRINK GERONIMO A310
WOLFE DAKOTA 976D
WOLFE MISS 541T

BAR 5 SA EVAN 440L
BAR 5 SA MALISSA 823N
HAXENT
MFL ZAILA 8Z
BRINK LEVI X011
BRINK ANITA Y140
WOLFE'S PASTA FF510N
DLS MOCHA 4G

- Had a ton of vigour as a calf despite his large birthweight.
- A lot of power in his pedigree.
- He was one of the thickest calves last Summer and his maternal born brother this year is one of the thickest too.
- His dam is a top producer. Her first calf sold to repeat buyers Ted and Joyce Henderson of Dawson Creek, BC.

977K**WOLFE KEN 977K**

PUREBRED G1438827 TWW 977K MAY 5, 2022

BW 95
Dec 8/22 W 810
May 15/23 W 1290
CE 6.1 BW 4.8 WW 70.7
YW 106.8 M 36.2
MCE 1.6 MWW 71.6

DOUBLE BAR D CHANDLER 153D
DOUBLE BAR D TRADER 19H
CAR-LAUR CASSANDRA 755C

VIRGINIA BARCELONA 46X
WOLFE BARBI 977D
WOLFE BRONZITE 833B

DOUBLE BAR D CHANDLER 143
DOUBLE BAR D BARBL 164A
PHS YUKON
SANMAR ROSEBUD 30R
CHAMPS ROMANO
ANCHOR "T" BARBI 46K
ANCHOR D STING 184W
SWANTEWITT CHARM 281Y

- Lots of body mass and smoothness.
- We really love how this Trader son has developed. Last year's maternal brother (pictured) was Dad's pick of the bulls and sold to repeat buyer Travis Trask or Pink Mountain BC.
- Her daughters are just coming into production and they are good ones too.

Wolfe Jailbreak 977J maternal brother

**994K****WOLFE KOMBUST 994K**

PUREBRED G1439021 TWW 994K APR 17, 2022

BW 95
Dec 8/22 W 880
May 15/23 W 1265
CE 3.1 BW 5.5 WW 76.7
YW 106.9 M 39.2
MCE -1.9 MWW 77.6

WOLFES THUNDER FF60T
WOLFES DYNAMITE FF19D
MFI ZAILA 78L

VIRGINIA BARCELONA 46X
WOLFE DOTTY 994D
WOLFE BABE 845B

BAR 5 SA EVAN 440L
BAR 5 SA MALISSA 823N
HAXENT
MFL ZAILA 8Z
CHAMPS ROMANO
ANCHOR "T" BARBI 46K
BEECH BROS X MAN 918X
WOLFE ZABRIELLA 736Z

- One of the few solid red bulls on offer.
- We wish we would have used his sire longer. Especially after seeing what his daughters are doing for us- tight udder and huge calves.

995K**WOLFE KONG FF 995K**

FULLBLOOD 1438839 TWW 995K MAY 11, 2022

BW 94
Dec 8/22 W 705
May 15/23 W 1275
CE 5.1 BW 5.5 WW 74.3
YW 104 M 32.7
MCE 3.3 MWW 69.9

JNR BOULDER
JNR BALDWIN
JNR TAJSA 475B

VIRGINIA BARCELONA 46X
WOLFE DANIELTA FF 995D
WOLFE BINDY FF 830B

MFI BAMBAM
JNR SHAMU
KUZ MR APPOLLO 11X
JNR TAJSA 241Z
CHAMPS ROMANO
ANCHOR "T" BARBI 46K
MFI JAHARI 8154
WOLFE'S WENDY FF 55W

- Full Fleckvieh.
- Calving ease pedigree. Finer-boned, should calve great.
- From our famous Wendy cow line. Lot 885J is also from this cow family.
- Dam's full brother 830F was our 2019 high seller. Last year's maternal brother sold to Davies Farms of Rocky View County.



Wolfe Danielita FF 995D dam



**130K****WOLFE KLANCY FF 130K**

POLLED FULLBLOOD P1445955 TWW 130K MAY 18, 2022

BW 86
Dec 8/22 W 755
May 17/23 W 960
CE 2.8 BW 5.7 WW 83.8
YW 118.5 M 43.5
MCE 0 MWW 85.4

ANCHOR D MR GIBBS 20Z
ANCHOR D OZARK 81G
ANCHOR D ADEL 81A

KUNTZ SONIC 14C
KSL FANCY 68F
KSL PLD ARIANA 20A

BAR 5 SA STRIDE 413P
ANCHOR D TYRA 20T
DOUBLE BAR D INTUITION
ANCHOR D CHERISE 101S
SOUTHSEVEN MR ADONIS 96Z
KUNTZ MISS MOSES 03X
DOUBLE BAR D FOUNDER 33Y
MASTERLOC JULIA 32W

- Full Fleckvieh, polled.
- Stylish and feminine front end.
- Dam was purchased as a bred from KSL's May calving program.

KSL Fancy 68F dam

**131K****WOLFE KITI FF 131K**

POLLED FULLBLOOD P1446002 TWW 131K APR 12, 2022

BW 85
Dec 8/22 W 750
May 17/23 W 985

CE 9.4 BW 3.1 WW 60.3
YW 88.8 M 36
MCE 3.4 MWW 66.1

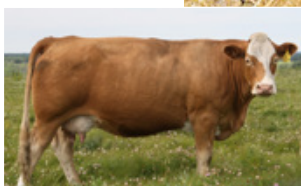
WLSF KAIMAT 930X
DOUBLE BAR D KITIMAT 237B
DOUBLE BAR D LOLITA 188Z

FGAF ELECTRIC AVENUE 140E
WOLFE HAZLEE 357H
WOLFE DEVORA 937D

WLSF KAUNLO
SALMON ARM SOBI 29R
RV NICKELBACK 6U
MFI LOLITA 4010
FGAF FRENCH ATTACK 010C
GIBBONS DORALEE
ANCHOR D STING 184W
WOLFE YEDA 708Y

- Full Fleckvieh, polled.
- An incredibly quiet heifer. You can scratch her in the pen.
- One of the last Kitimat daughters to sell.
- Her great granddam, Yeda, is one of our oldest cows. We are excited for her NUG Rambler calf due next Spring (See Rambler on the back cover).

Wolfe Yeda 708Y great granddam

**134K****WOLFE KIMBERLY FF 134K**

FULLBLOOD 1445990 TWW 134K APR 8, 2022

BW 96
Dec 8/22 W 800
May 17/23 W 1010
CE 9.5 BW 3.6 WW 68.7
YW 93.4 M 38.7
MCE 5.3 MWW 73

SOUTHSEVEN MR ADONIS 96Z
BLACK GOLD ELEVATION 20E
BLACK GOLD MS FLORA 84B

RWR SULLY 9E
WOLFE GEDIE FF 329G
SWANTEWITT EMBER 302E

BLCC MR ADONIS 30X
SOUTH SEVEN MISS 70S
BAR 5 FF HEXAGON 412Y
MFI FLORA 6144

JNR'S SALTON
IPU MS. ROWEENA 204X
SWANTEWITT ARNOLD 260A
SWANTEWITT VENUS 23U

- Full Fleckvieh.
- The only Fullblood Elevation daughter on offer. We love our Elevation daughters so far. Check out Lot 330K to see what an Elevation daughter can do!

Black Gold Ms Flora 84B paternal granddam

**136K****WOLFE KESTYN FF 136K**

FULLBLOOD 1446010 TWW 136K APR 11, 2022

BW 85
Dec 8/22 W 675
May 17/23 W 950

CE 10.6 BW 3.1 WW 67.9
YW 92.9 M 39.6
MCE 5.3 MWW 73.6

JNR'S SALTON
RWR SULLY 9E
IPU MS. ROWEENA 204X

BLACK GOLD ELEVATION 20E
WOLFE HALO FF 364H
WOLFE ANGEL FF 818A

FGAF SELDOM 835L
JNR'S MARGO 2ND
CHAMPS ROMANO
K&S ROSALIND 45R
SOUTHSEVEN MR ADONIS 96Z
BLACK GOLD MS FLORA 84B
MFI JAHARI 8154
WOLFE MISS FF 662X

- Full Fleckvieh.
- The only Fullblood Sully daughter in the sale.
- Maternal brother to her dam, Enoch, was a herd sire for Lone Stone Farms.
- Our first Sully daughters are proving to produce very well (Lot 109K is from a Sully cow).

Wolfe Enoch FF 818E maternal brother to dam



**148K****WOLFE KORAL FF 148K**

FULLBLOOD 1445962 TWW 148K JUNE 7, 2022

BW 91
Dec 8/22 W 605
May 17/23 W 865
CE 4.4 BW 5.7 WW 76.3
YW 107.5 M 39.3
MCE 2.2 MWW 77.4

BLACK GOLD ELEVATION 20E
WOLFE GEYSER FF 885G
WOLFE CHEYENNE FF 885C

MFI JAHARI 8154
WOLFE AUSTRALIA FF 810A
WOLFE MISS FF 679X

SOUTHSEVEN MR ADONIS 96Z
BLACK GOLD MS FLORA 84B
BRINK GERONIMO A310
WOLFE ZAYLEE FF 734Z
SHAWACRES JAHARI 50L
MFI PETRA 2059
WOLFE STETSON FF 35S
WOLFE MISS 478S

- Full Fleckvieh.
- Traditional colour with a traditional, wide hip. Maintains a feminine front.
- Dam has produced a couple highsellers. One went to Jim Peel of Bezzanson AB.
- Dam is 10 years old.

Wolfe Australia FF 810A dam

**152K****WOLFE KALISTA FF 152K**

FULLBLOOD 1446027 TWW 152K APR 26, 2022

BW 97
Dec 8/22 W 745
May 17/23 W 975
CE 3.9 BW 5.4 WW 74.2
YW 101.3 M 33.4
MCE 3.5 MWW 70.5

BEL C&B WESTERN 2ND
WOLFES BELL FF62F
WOLFES CANDY C138W

MFI JAHARI 8154
WOLFE CALISTA FF 887C
WOLFE ZARIA FF 746Z

SIM-ROC C&B WESTERN
ADRIAN
BRINK AMOS S621
BHR LADY MARIETTA H264E
SHAWACRES JAHARI 50L
MFI PETRA 2059
VIRGINIA BARCELONA 46X
WOLFE MISS FF 599U

- Full Fleckvieh.
- From the Jillian cow family- which has raised multiple highsellers.
- Dam was one of Courtney's Pen of Three 4-H heifers.
- She should have a great udder like her dam and granddam. We still have her 11-year-old granddam.

MFI Petra 2059 great granddam

**155K****WOLFE KOALA FF 155K**

FULLBLOOD 1446338 TWW 155K APR 26, 2022

BW 90
Dec 8/22 W 695
May 17/23 W 945
CE 4.1 BW 5.2 WW 78.9
YW 109.7 M 41.2
MCE 3.2 MWW 80.6

ANCHOR D MR GIBBS 20Z
ANCHOR D OZARK 81G
ANCHOR D ADEL 81A

BLACK GOLD ELEVATION 20E
WOLFE GUPPY FF 325G
SWANTEWITT TURTLE 77T

BAR 5 SA STRIDE 413P
ANCHOR D TYRA 20T
DOUBLE BAR D INTUITION
ANCHOR D CHERISE 101S
SOUTHSEVEN MR ADONIS 96Z
BLACK GOLD MS FLORA 84B
MFI VISION 3078
SWANTEWITT DOLPHIN 115M

- Full Fleckvieh.
- Thickness from both Ozark and Elevation while maintaining a clean front end.
- Her Swantewitt granddam lived to be 14!
- Last year's maternal brother sold for \$14,000 to Sandy Ridge Cattle Co. of La Crete AB.

Wolfe Jersey FF 325J maternal brother

**156K****WOLFE KARINA FF 156K**

FULLBLOOD 1445945 TWW 156K MAY 8, 2022

BW 91
Dec 8/22 W 715
May 17/23 W 960
CE 8.2 BW 4 WW 67.6
YW 94.6 M 40
MCE 1.6 MWW 73.8

VIRGINIA RADISON 5Z
CLEAWATER HUGH 26H
WOLFES FRIDA FF84F

BLACK GOLD ELEVATION 20E
WOLFE HUSH FF 345H
KEET'S CARINA 30C

CROSSROAD RADIUM 789U
SS LEGACY 5U FF
DOUBLE BAR D KITIMAT 237B
WOLFES CASEY FF48C
SOUTHSEVEN MR ADONIS 96Z
BLACK GOLD MS FLORA 84B
BEE VORTEX 12A
KEET'S XANTHE 15X

- Full Fleckvieh.
- One of the thickest in the pen.
- Very attractive, moderate, and well-balanced.
- Granddam was purchased from Keet's Simmentals.
- Maternal brother to dam, 30F, was a highseller to Poole's Arrow Ranch of Prince George BC.

Keet's Carina 30C granddam



**157K****WOLFE KARLYN FF 157K**

FULLBLOOD 1446017 TWW 157K APR 10, 2022

BW 80
Dec 8/22 W 670
May 17/23 W 940
CE 7.2 BW 4.6 WW 66.4
YW 91.3 M 38.8
MCE 2.8 MWW 72

VIRGINIA RADISON 5Z
CLEAWATER HUGH 26H
WOLFES FRIDA FF84F

BLACK GOLD ELEVATION 20E
WOLFE HARLYN FF 384H
WOLFE DOLORES FF 991D

CROSSROAD RADIUM 789U
SS LEGACY 5U FF
DOUBLE BAR D KITIMAT 237B
WOLFES CASEY FF48C
SOUTHSEVEN MR ADONIS 96Z
BLACK GOLD MS FLORA 84B
BRINK GERONIMO A310
WOLFE ACORN FF 795A

- Full Fleckvieh.
- Well-muscled with great calving ease. She could raise you your next heifer bull. We are keeping a Hugh son as our next heifer bull (369K).
- A heifer with great style.

Wolfe Frida FF84F paternal granddam

**158K****WOLFE KHLOE FF 158K**

FULLBLOOD 1445956 TWW 158K MAY 20, 2022

BW 101
Dec 8/22 W 685
May 17/23 W 930
CE 2.3 BW 5.7 WW 71.6
YW 99.4 M 28.3
MCE 2.5 MWW 64.1

JNR BOULDER
JNR BALDWIN
JNR TAJSA 475B

DOUBLE BAR D AERO 298B
SWANTEWITT FREYA 294E
MFI PETRA 123M

MFI BAMBAM
JNR SHAMU
KUZ MR APPOLLO 11X
JNR TAJSA 241Z
WLSF ABESLY
PROSTOCK GRETCHEN 257Y
BRG DRIVER H880
MFI PETRA 30J

- Full Fleckvieh.
- Larger framed for a Baldwin.
- Lots of hair.
- Unique maternal pedigree for our herd.

Double Bar D Aero 298B maternal grandsire

**159K****WOLFE KLARA 159K**

FULLBLOOD P1446029 TWW 159K APR 16, 2022

BW 95
Dec 8/22 W 805
May 17/23 W 1050
CE 4.4 BW 5.7 WW 81.7
YW 116 M 33.8
MCE 2.8 MWW 74.6

JNR BOULDER
JNR BALDWIN
JNR TAJSA 475B

ANCHOR D STING 184W
WOLFE DEARDRA 960D
WOLFE MISS 577U

MFI BAMBAM
JNR SHAMU
KUZ MR APPOLLO 11X
JNR TAJSA 241Z
DOUBLE BAR MAKE M PLLED
MS DD&E STAR GAZER 21B
WOLFE STEIGER FF 32S
WOLFE NEVE 322N

- Polled.
- Dam is a 2016 model and still has an awesome udder.
- Long with extra frame.
- Last year her maternal brother (pictured) was one of our lead-off bulls.

Wolfe Jepson 960J maternal brother



Carcass ultrasound results can be found on the 'Interactive Supplement Sheet' on our website wolfefarms.ca

**23K****CJ ZOO 23K**
PUREBRED G1444364 CJ 23K APR 8, 2022

BW 90
Dec 8/22 W 680
May 17/23 W 935
CE 5.6 BW 4.7 WW 69.7
YW 94.3 M 40.6
MCE -0.9 MWW 75.5

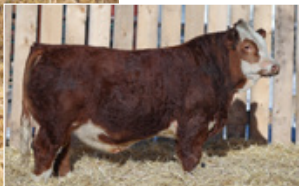
VIRGINIA RADISON 5Z
CLEAWATER HUGH 26H
WOLFES FRIDA FF84F

WOLFES DYNAMITE FF19D
CJ ZYNA 18H
COURTNEY ZABRINA 772Z

CROSSROAD RADIUM 789U
SS LEGACY 5U FF
DOUBLE BAR D KITIMAT 237B
WOLFES CASEY FF48C
WOLFES THUNDER FF60T
MFI ZAILA 78L
BEECH BROS X MAN 918X
COURTNEY XANDREA 4X

- Very clean, feminine heifer.
- From the same cow family as Lot 19K.
- **Exposed to WOLFE HUDSON FF 313J (1380126) from July 1-September 12.**

Cleawater Hugh 26H sire

**132K****WOLFE KESHA 132K**

PUREBRED G1445954 TWW 132K MAY 18, 2022

BW 98
Dec 8/22 W 685
May 17/23 W 950
CE 4.1 BW 5.8 WW 75.3
YW 105.8 M 40.8
MCE 1.8 MWW 78.4

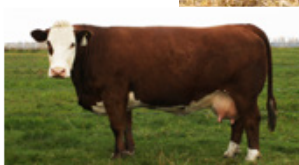
BLACK GOLD ELEVATION 20E
WOLFE GEYSER FF 885G
WOLFE CHEYENNE FF 885C

MFI JAHARI 8154
WOLFE DELILAH 933D
WOLFE MISS 553T

SOUTHSEVEN MR ADONIS 96Z
BLACK GOLD MS FLORA 84B
BRINK GERONIMO A310
WOLFE ZAYLEE FF 734Z
SHAWACRES JAHARI 50L
MFI PETRA 2059
WOLFE'S PASTA FF510N
WOLFE MOIRA 24M

- From a cow family with lots of muscle.
- You can tell there's Pasta in her by her extra capacity, great hip and thick hair coat.
- **Exposed to WOLFE HUDSON FF 313J (1380126) from July 1-September 12.**

Wolfe Cheyenne FF 885C paternal granddam

**133K****WOLFE KARLEY 133K**

PUREBRED G1445951 TWW 133K MAY 13, 2022

BW 95
Dec 8/22 W 675
May 17/23 W 975
CE 5.9 BW 4.9 WW 74.1
YW 110.8 M 41.7
MCE 3.8 MWW 78.8

BLACK GOLD CRUDE
VIRGINIA GAGE 34G
SS UNIQUE 34U FF

VIRGINIA BARCELONA 46X
WOLFE FLASHY 288F
WOLFE BELLE 838B

STARWEST BRYCK
PATS JANIS 3W
BAR 5 SA BANKER 833R
SS RIKKI 25R FF
CHAMPS ROMANO
ANCHOR "T" BARBI 46K
WOLFES STETSON FF 35S
WOLFE MISS 402P

- Expect her to throw larger-framed calves, being a Gage daughter.
- Maternal brother 288J was kept to breed our commercial heifers (See page 33).
- **Exposed to WOLFE HUDSON FF 313J (1380126) from July 1-September 12.**

**135K****WOLFE KYPSEY 135K**

PUREBRED G1446340 TWW 135K APR 26, 2022

BW 92
Dec 8/22 W 700
May 17/23 W 980
CE 1.4 BW 6.8 WW 90.9
YW 130.7 M 42.5
MCE 1.8 MWW 88

ANCHOR D MR GIBBS 20Z
ANCHOR D OZARK 81G
ANCHOR D ADEL 81A

BRINK GERONIMO A310
WOLFE GYPSY 334G
WOLFE DUSTI 982D

BAR 5 SA STRIDE 413P
ANCHOR D TYRA 20T
DOUBLE BAR D INTUITION
ANCHOR D CHERIE 101S
BRINK LEVI X011
BRINK ANITA Y140
VIRGINIA BARCELONA 46X
WOLFE BONNIE 871B

- Only solid coloured heifer on offer.
- Larger frame from the dam's side with some extra punch from Ozark.
- Dam has an excellent udder.
- We still have her great granddam, 871B.
- **Exposed to WOLFE HUDSON FF 313J (1380126) from July 1-September 12.**

Wolfe Hudson FF 313J service sire





137K

WOLFE KAYLA 137K

PUREBRED G1445961 TWW 137K JUNE 2, 2022

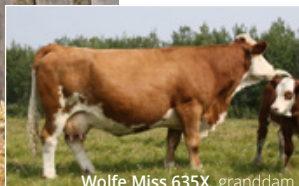
BW 104
Dec 8/22 W 600
May 17/23 W 1000
CE 5 BW 5.5 WW 76.7
YW 107.4 M 31.6
MCE 2.4 MWW 69.9

SOUTHSEVEN MR ADONIS 96Z
BLACK GOLD ELEVATION 20E
BLACK GOLD MS FLORA 84B

SKORS CROCKET 32Y
WOLFE CINNAMON 905C
WOLFE MISS 635X

BLCC MR ADONIS 30X
SOUTH SEVEN MISS 70S
BAR 5 FF HEXAGON 412Y
MFI FLORA 6144
LBR CROCKET R81
NUH MS BOLD HORIZON 561R
WOLFE STEIGER FF 32S
WOLFE MISS 488S

- Lots of longevity in this Elevation daughter. Her granddam, 635X, is currently our second oldest cow at nearly 14 years old.
- Lots of hair and well-balanced like most Elevation offspring.
- **Exposed to WOLFE HUDSON FF 313J (1380126) from July 1-September 12.**



Wolfe Miss 635X granddam

138K

WOLFE KIARA 138K

PUREBRED G1446000 TWW 138K APR 11, 2022

BW 83
Dec 8/22 W 705
May 17/23 W 900
CE 7.9 BW 4.6 WW 65.5
YW 86 M 34
MCE 3.8 MWW 66.8

JNR'S SALTON
RWR SULLY 9E
IPU MS. ROWEENA 204X

JNR BROKER
WOLFE HICKORY 356H
WOLFE ELDA 258E

FGAF SELDOM 835L
JNR'S MARGO 2ND
CHAMPS ROMANO
K&S ROSALIND 45R
MFI BAMBAM
JNR SHAMU
WOLFES BREWSTER FF78B
WOLFE ZELDA 735Z

- She missed picture day as she was in a far-away pasture. Be sure to check out her video about a week prior to the sale on our website, along with all the other lots.
- Dark red and goggle eyed.
- She is the only bred heifer on offer in-calf to Elevation.
- **Exposed to Black Gold Elevation 20E (1214125) July 2- Sept 16.**



BLACK GOLD ELEVATION 20E SERVICE SIRE TO TWW 138K



139K

WOLFE KAILUA 139K

PUREBRED G1446006 TWW 139K APR 8, 2022

BW 86
Dec 8/22 W 685
May 17/23 W 985
CE 7.2 BW 5.5 WW 67.1
YW 95.3 M 36.8
MCE 3.8 MWW 70.3

WLSF KAIMAT 930X
DOUBLE BAR D KITIMAT 237B
DOUBLE BAR D LOLITA 188Z

BRINK CUSTER E773
WOLFE HONEYMOON 359H
WOLFE BRONZITE 833B

WLSF KAUNLO
SALMON ARM SOBI 29R
RV NICKELBACK 6U
MFI LOLITA 4010
BRINK FLEX C516
BRINK CAROL C510
ANCHOR D STING 184W
SWANTEWITT CHARM 281Y

- A bit finer-boned and refined being from our heifer bull Kitimat.
- Dam has an excellent udder.
- From the same cow family as Lot 977K
- **Exposed to RWR SULLY 9E (1211279) from July 1-September 16.**

Dam with granddam



142K

WOLFE KAMRYN 142K

PUREBRED G1445925 TWW 142K APR 27, 2022

BW 92
Dec 8/22 W 690
May 17/23 W 975
CE 0.3 BW 7.2 WW 88.2
YW 123.8 M 39.4
MCE 0.6 MWW 83.5

ANCHOR D MR GIBBS 20Z
ANCHOR D OZARK 81G
ANCHOR D ADEL 81A

BRINK GERONIMO A310
WOLFE GODIVA 305G
WOLFE BEAUTY 854B

BAR 5 SA STRIDE 413P
ANCHOR D TYRA 20T
DOUBLE BAR D INTUITION
ANCHOR D CHERISE 101S
BRINK LEVI X011
BRINK ANITA Y140
SKORS CROCKET 32Y
WOLFE MISS 594U

- Might be the nicest Ozark daughter we have sold.
- Lots of spring of rib like her sire.
- Dam has a near perfect udder.
- **Exposed to WOLFE HUDSON FF 313J (1380126) from July 1-September 12.**



**143K****WOLFE KORA 143K**

PUREBRED G1445926 TWW 143K APR 28, 2022

BW 93
Dec 8/22 W 760
May 17/23 W 990
CE 3.3 BW 6.2 WW 81.4
YW 114.1 M 35.2
MCE 2.9 MWW 75.9

BLACK GOLD CRUDE
VIRGINIA GAGE 34G
SS UNIQUE 34U FF

WOLFE BIRNER FF 318B
WOLFE ELORY 201E
WOLFE AMELIA 786A

STARWEST BRYCK
PATS JANIS 3W
BAR 5 SA BANKER 833R
SS RIKKI 25R FF
CHERRY CREEK CARLSBERG 2S
SWANTEWITT ZAITH 57Z
MVS GUNNER 1N
WOLFE MISS 620W

- Lots of thickness in her pedigree.
- Her dam is a direct Birner. We were sadly only able to get one calf crop from Birner before he was injured.
- Her great granddam, 620W, is currently our oldest cow at nearly 15 years old!
- **Exposed to WOLFE HUDSON FF 313J (1380126) from July 1-September 12.**

144K**WOLFE KACEY 144K**

PUREBRED G1445935 TWW 144K MAY 2, 2022

BW 95
Dec 8/22 W 755
May 17/23 W 985
CE 5.6 BW 6 WW 78.7
YW 114.8 M 40.6
MCE 2.8 MWW 79.9

BLACK GOLD ELEVATION 20E
WOLFE GEYSER FF 885G
WOLFE CHEYENNE FF 885C

VIRGINIA BARCELONA 46X
WOLFE DACEY 962D
WOLFE BUMBLEBEE 856B

SOUTHSEVEN MR ADONIS 96Z
BLACK GOLD MS FLORA 84B
BRINK GERONIMO A310
WOLFE ZAYLEE FF 734Z
CHAMPS ROMANO
ANCHOR "T" BARBI 46K
ANCHOR D STING 184W
WOLFE MISS 597U

- A well-muscled Geyser with lots of frame. One of our favorites in the bred group.
- Shows to have great feet.
- Should have an awesome udder like the cows behind her.
- Maternal brother (pictured) was a 2019 highseller to Lorne and Crystal Brad of Bonnyville AB.
- **Exposed to WOLFE HUDSON FF 313J (1380126) from July 1-September 12.**



Wolfe Flaunt 962F maternal brother

**145K****WOLFE KENZIE 145K**

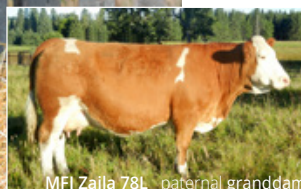
POLLED PUREBRED PG1445949 TWW 145K MAY 11, 2022

BW 91
Dec 8/22 W 635
May 17/23 W 880
CE 0.2 BW 7.4 WW 75.3
YW 106.2 M 30.9
MCE -4.5 MWW 68.5

WOLFES THUNDER FF60T
WOLFES DYNAMITE FF19D
MFI ZAILA 78L

ANCHOR D STING 184W
WOLFE BUMBLEBEE 856B
WOLFE MISS 597U

BAR 5 SA EVAN 440L
BAR 5 SA MALISSA 823N
HAXENT
MFL ZAILA 8Z
DOUBLE BARD MAKE M PLLED
MS DD&E STAR GAZER 21B
ANCHOR D MESSIAH 87R
WOLFE NICKI 331N



MFI Zaila 78L paternal granddam

- Polled. The only Dynamite daughter on offer. The Dynamite's have very tight udders.
- Granddam 597U and paternal granddam 78L lived to be 14!
- All 7 of her dam's calves have been registered.
- Lots of hair.
- Maternal brother, 856G, was a highseller to Little Willow Creek Ranch of Frenchman Butte SK.
- **Exposed to WOLFE HUDSON FF 313J (1380126) from July 1-September 12.**

147K**WOLFE KYLA 147K**

PUREBRED G1445928 TWW 147K APR 29, 2022

BW 92
Dec 8/22 W 740
May 17/23 W 1015
CE 5.5 BW 4.9 WW 77.9
YW 109.9 M 36.6
MCE 2.6 MWW 75.5

BLACK GOLD ELEVATION 20E
WOLFE GEYSER FF 885G
WOLFE CHEYENNE FF 885C

MFI JAHARI 8154
WOLFE DEJA VU 973D
WOLFE MISS 555T

SOUTHSEVEN MR ADONIS 96Z
BLACK GOLD MS FLORA 84B
BRINK GERONIMO A310
WOLFE ZAYLEE FF 734Z
SHAWACRES JAHARI 50L
MFI PETRA 2059
ANCHOR D MESSIAH 87R
SWANTEWITT 34K

- Only blonde heifer on offer.
- Paternal brother was a 2019 highseller to Klassen Ranching.
- Should have an excellent udder.
- **Exposed to RWR SULLY 9E (1211279) from July 1-September 16.**

RWR Sully 9E service sire



**149K****WOLFE KASHA 149K**

PUREBRED G1445946 TWW 149K MAY 9, 2022

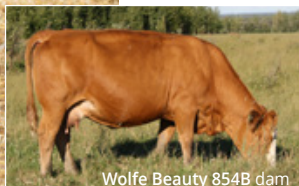
BW 98
Dec 8/22 W 615
May 17/23 W 910
CE 2.1 BW 6.5 WW 73
YW 103.7 M 32.7
MCE -1.3 MWW 69.1

DOUBLE BAR D CHANDLER 153D
DOUBLE BAR D TRADER 19H
CAR-LAUR CASSANDRA 755C

SKORS CROCKET 32Y
WOLFE BEAUTY 854B
WOLFE MISS 594U

DOUBLE BAR D CHANDLER 143
DOUBLE BAR D BARBL 164A
PHS YUKON
SANMAR ROSEBUD 30R
LBR CROCKET R81
NUH MS BOLD HORIZON 561R
ANCHOR D MESSIAH 87R
WOLFE NISA 336N

- The only Trader daughter in the sale. This is our first year for Trader's.
- Nice straight topline.
- Her dam is from the same cow family as Lot 379K. She has an amazing track record.
- **Exposed to WOLFE HUDSON FF 313J (1380126) from July 1-September 12.**



Wolfe Beauty 854B dam

150K**WOLFE KINLEY 150K**

PUREBRED G1446020 TWW 150K APR 25, 2022

BW 85
Dec 8/22 W 740
May 17/23 W 910
CE 4.3 BW 5.6 WW 74.8
YW 100.4 M 37.7
MCE 3.7 MWW 75.1

BEL C&B WESTERN 2ND
WOLFES BELL FF62F
WOLFES CANDY C138W

SWANTEWITT X ROCK 42X
WOLFE ZABRIELLA 736Z
WOLFE MISS 461R

SIM-ROC C&B WESTERN
ADRIAN
BRINK AMOS S621
BHR LADY MARIETTA H264E
SKORS PRIME CUT 127T
SWANTEWITT SKYLITE 21S
JACK PINE ANDY II FF1J
WOLFE NOLEDGE 345N

- Dam is one of our oldest cows.
- Bell always adds length to his progeny.
- **Exposed to WOLFE HUDSON FF 313J (1380126) from July 1-September 12.**

**151K****WOLFE KIA 151K**

PUREBRED G1445983 TWW 151K APR 18, 2022

BW 92
Dec 8/22 W 695
May 17/23 W 975
CE 4.1 BW 5.1 WW 69.6
YW 102.6 M 35.5
MCE 2.1 MWW 70.3

BLACK GOLD CRUDE
VIRGINIA GAGE 34G
SS UNIQUE 34U FF

DOUBLE BAR D AERO 298B
WOLFE GIA 304G
WOLFE ZIA 771Z

STARWEST BRYCK
PATS JANIS 3W
BAR 5 SA BANKER 833R
SS RIKKI 25R FF
WLSF ABESLY
PROSTOCK GRETCHEN 257Y
SWANTEWITT X ROCK 42X
WOLFE MISS 601U

- We still have her 11-year-old granddam 771Z.
- Should have a nice tidy udder like her Aero dam.
- **Exposed to WOLFE HUDSON FF 313J (1380126) from July 1-September 12.**

153K**WOLFE KIRA 153K**

PUREBRED G1446019 TWW 153K APR 17, 2022

BW 95
Dec 8/22 W 820
May 17/23 W 1070
CE 3.9 BW 5.6 WW 73.5
YW 107.3 M 36.6
MCE 2.1 MWW 73.3

BLACK GOLD CRUDE
VIRGINIA GAGE 34G
SS UNIQUE 34U FF

MFI JAHARI 8154
WOLFE ZIRA 733Z
WOLFE MISS 541T

STARWEST BRYCK
PATS JANIS 3W
BAR 5 SA BANKER 833R
SS RIKKI 25R FF
SHAWACRES JAHARI 50L
MFI PETRA 2059
WOLFE'S PASTA FF510N
DSLS MOCHA 4G

- Dam is one of our oldest cows, at age eleven. We have registered all but one of her calves.
- The Gage offspring always have added size and capacity.
- This heifer will make a big brood cow that should give you heavy calves.
- **Exposed to WOLFE HUDSON FF 313J (1380126) from July 1-September 12.**



MFI Jahari 8154 maternal grandsire



**154K****WOLFE KAT 154K**

PUREBRED G1446015 TWW 154K APR 18, 2022

BW 76
Dec 8/22 W 730
May 17/23 W 970
CE 7.3 BW 4.9 WW 61.8
YW 84.3 M 40.6
MCE 2.6 MWW 71.5

WLSF KAIMAT 930X
DOUBLE BAR D KITIMAT 237B
DOUBLE BAR D LOLITA 188Z

BRINK GERONIMO A310
WOLFE Hyla 374H
WOLFE XYLA 648X

WLSF KAUNLO
SALMON ARM SOBI 29R
RV NICKELBACK 6U
MFI LOLITA 4010
BRINK LEVI X011
BRINK ANITA Y140
DSLS DEVAN FF 51T
WOLFE MISS 448R



Double Bar D Lolita 188Z paternal granddam

- Four excellent dark red hooves.
- The calf she's carrying should have a ton of pigmentation.
- Granddam, 648X, was one of Courtney's 4-H cows. We were happy to get a Geronimo daughter from her (154K's dam) before we retired her.
- **Exposed to RWR SULLY 9E (1211279) from July 1-September 16.**

Be sure to check out our lot videos about a week prior to the sale on wolfefarms.ca

2022 BUYERS

101 Simmentals
5S Cattle Co. ^
Alliance Simmentals
Alix Colony^
Bar 9 Simmentals
Wade Birkett ^
Lyle Breitreuz
Ron Bulechek
Camplair Farms
Joe Cech
Cedar View Simmentals
Bernard Chamberland^
Chug Away Ranch Ltd^
Cow Boss Simmentals
Arnold Daling & Lois Tucker
Davies Farms
Clayton Davies
Jim Davies
Diamond H Ranch
Rob Elzinga^

Fallen Timber Farms
Ferrybank Colony ^
Fleming Farms^
Rick & Jennifer Foley
Abe Hiebert
HMR Livestock ^
Tony Isaac
Jassman Farm Ltd.^
Chanley Jassman
Jem Simmentals
Ed Johnston^
Klassen Ranching ^
L4 Farm
Clayton Lieveise^
Issac Martins
Garth Meehan^
Morlock Farms
MT Ranch
Dave Neufeld
Nolara Farms^

Peace View Colony ^
Ashley Perepelkin
Poole's Arrow Ranch Ltd.^
Rempel Farms Ltd.^
Regan Repka
Ridge Valley Colony^
Sandy Ridge Cattle Co.
Short Grass Farms ^
Snowdon Farms
South Peace Colony ^
Norman Theroux^
Travis Trask^
Warkentin Land & Cattle Inc. ^
Kevin Wheale
George and Susie Wiebe ^
John Wolfe^

^ Denotes Repeat Buyers

COMMERCIAL HEIFERS

LOT I DUE JANUARY 29ST

29 heifers in packages of 4-6 head.
14-day exposure to TWW 288J (1380094) and JSJ 248K (1412488); April 20 – May 3.



LOT II DUE MARCH 26TH

60 heifers in packages of 4-6 head.
Exposed to TWW 288J (1380094) and JSJ 248K (1412488) from June 15 – August 31.



SERVICE SIRES



TWW 288J



JSJ 248K

WINTERING OPTION

We could feed your commercial bred heifer purchases up until a month prior to their due date(s). Hopefully this could assist anyone that may be short on feed. Contact us for details regarding dates and costs.







UPCOMING HERD SIRES



RWR WALKER 15J



ANCHOR D KASH 403K



JNR BARBARIAN



NUG RAMBLER 228K

