

Jack Pine Simmentals

Bred Female Dispersal Sale

December 7, 2002
Red Deer, AB

PEERS. AB
693-3981

JOHN & SUE
WOLFE

THE CUBS

JACK PINE
SIMMENTALS
BREEDING
YOUR KIND
OF CATTLE - FLECKVIEH



Sales Management Comments

John and Sue Wolfe have played a major role and have made a major impact, not only on the Fleck Fest Sale since its inception, but also on the entire Fleckvieh Simmental business. John is a thinker and a doer. He does not take the easy road of just going with the flow, but rather, he analyzes each situation carefully before making a decision and taking a stand. These are the qualities that make John a leader not a follower.

Integrity, you better believe it! You ask John a question about his cattle and you can expect a straight, honest answer. In fact, I have observed on a few occasions when this actually cost him money, for the short term, when he has suggested to a potential buyer that perhaps another breeder's animal in the barn might suit his particular needs, better than John's own sale animal. Our breed would be better off if more breeders did this. You can be sure that in the long run this unselfish approach pays big dividends.

John has always been able to see past the end of his driveway. He looks at the big picture and recognizes that unless fellow breeders, who are all his prospective customers, do well, that no matter what he does, success will not happen.

John is a student of BEEF Simmentals, namely Fleckvieh! He did in depth studies of German and Austrian pedigrees when he started in Fleckvieh and has continued to this day. He has used all of the tools available to him in his unwavering dedication to produce fault free, easy doing cattle. He has imported live animals, embryos and semen from Europe from some of the most highly proven beef Fleckvieh in the world.

John got a wake up call! About a year ago he had a major health scare. Thankfully it turned out much, much better than anticipated. But student John and his wonderful wife Sue decided that it was time to look at from where they had come, where they were, and far more importantly, where they were going.

There wasn't much doubt that stress played a significant role in John's health scare, so in typical John fashion, he, Sue and their family made a calculated decision to take some time off.

John has always held down a full time job in addition to his cattle operation, which hasn't left a lot of time for putting your feet up, much less an extended vacation. John took early retirement from his career and they made the decision to have a cow herd dispersal in the fall of 2002.

Son Tony will be wintering the 2002 calves this winter and John and Sue are going to do exactly what they want to do, not what they have to do. What does the future hold? It will probably depend on how well they adjust to a much more laid back life. Knowing John it is my guess that at least some of those heifer calves they have kept will be the foundation of the new Jack Pine, perhaps scaled down, Fleckvieh herd.

So folks, you are going to enjoy this catalogue. It is certainly one of the most informative ones that we have produced. The effort John has put into the footnotes certainly should be invaluable in assisting your decision on the best animals to suit your particular objective.

Keep in mind that John hasn't become hung up on limiting himself to animals from a particular country. He has blended what he has determined to be the best bloodlines from whatever country to best meet his

own objectives, being: easy fleshing, fertile, good udders, good disposition and structural correctness.

The catalogue is laid out in cow family format. The incredible Mitzi cow family is from lot 201 to 218, Almrausch from 219 to 228 and so on. Notice how often these two cows show up on both sides of the pedigrees of their offspring.

The objectives at Jack Pine have never wavered. They have not chased new trends. If you believe that easy keeping cattle have a place on your farm, you will not find any others that have the depth of pedigree in that trait of those in this sale.

John and Sue, if you do decide to hang up your spurs for keeps, you have made an excellent contribution to the Fleckvieh industry. For sure, keep in touch with your many friends in this wonderful fraternity.

Now, back to business. If you would like more information on these animals phone John. For those who are unable to attend the sale, these excellent footnotes will certainly assist you in making your choices. Please feel free to call any of us at Transcon and we will be pleased to update you. We will also represent you on sale day as if you were in attendance yourself and at no cost to you.

We look forward to seeing you at this Jack Pine dispersal and at the other sales over this Fleckvieh weekend.

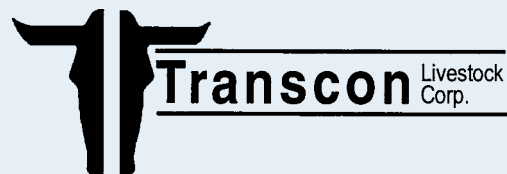
Rodney James

The Jack Pine herd is built from the cow family up. The most seriously intentional study of the base cow to build around has been utilized. If you have ever had an in-depth conversation with John Wolfe you may have noticed he uses the words "capacity" and "volume" and the phrase "they need to convert forage to muscle and milk". If you have ever seen John Wolfe's cowherd, you may have noticed he practices what he preaches.

Another interesting tool that has been utilized constructing the Jack Pine herd has been the European livestock scoring system. I am not qualified to even start explaining it, but I certainly would encourage you to visit with John about its merits. Incidentally, "Almrausch" proudly boasts a higher score than most of the dams of the bulls ever imported from Germany or Austria.

This cowherd has not played on fads, but has played on practicality. The truest essence of what makes a Fleckvieh Simmental are bred into their lineage as deep as you will find. Any true stockman would be, and should be, proud to own a herd of cows like this.

Jay Good



Welcome to our Dispersal Sale

We welcome you all to our dispersal sale. As most dispersals, it was not an easy decision to make. It was primarily brought on by a health scare last fall and we decided we needed some time to do a few adventures. This is likely not a conclusion, but a major break from our full Fleckvieh venture. We need some time to reflect on our past and future ambitions. I'm sure we will be involved with Fleckvieh in some capacity until we can no longer stand up.



Our herd has been developed from a few strong cow families. This reflects our breeding philosophy as our strongest emphasis has been on the maternal strength of this great breed. Our main criteria in selecting bloodlines has been based on fertility, trouble free udders, cows ability to calve easily (pelvic size), disposition, growth, capacity, and easy fleshing ability. It was very easy for us to become strong Fleckvieh enthusiasts as we have found them to have these attributes. We judge our cows on their ability to wean a big calf from pasture without the influence of creep feed. We have used embryo transplanting as a means of expanding the herd while improving on quality. We have also blended genetics from different countries, always trying to improve our breeding objectives. You will notice we haven't included EPDs in our catalog. We felt it wasn't representative of our bloodlines with the heavy European influence that start with 0 EPDs in our North American system. This information is available on the CSA website.

As most of you know, we were one of the five founding members of the "Western Simmental Fleckvieh Breeders Group" in 1987 and have contributed to the Fleck Fest sale since its beginning 15 years ago. We would like to take this opportunity to publicly thank the group and the consignors over the years for your support to the sale, to us, and your great friendships. We are confident this sale event will be a source of superior genetics for many years to come. We are also proud of "The Cubs" who will continue our legacy in this sale. Shane and Shannon, along with their next generation of cubs will now have their own identity as Wolfe's Fleckvieh.

We want to thank the Transcon crew, Steve Dorrان, the Ringmen, Consultants, Simmental Country, and our devoted cattle crew for your expertise and help in making this sale happen. A special thank you to Rodney James and Bob Wilson for their unsurpassed integrity and help in developing the Fleck Fest sale which gave us the opportunity to expose our breeding to the industry.

We would like to thank our many previous customers and to all who will be supporting our sale. We hope and trust our females will be as good to you as they've been to us.

In closing, we ask you to feel free to give us a call on any questions you may have before the sale. We always love to talk "Fleckvieh".

Jack Pine Simmentals

John & Sue Wolfe
Box 7, Site 16, RR 1

Peers, AB T0E 1W0 Ph/fax: 780/693-3981

Jack Pine Simmentals Dispersal Sale

Westerner Grounds, Red Deer, AB

AGENDA

Friday, December 6

7:00 p.m. Fleck Select Sale

Saturday, December 7

11:00 a.m. Pre-sale brunch

1:00 p.m. Fleck Fest sale

~4:30 p.m. Jack Pine Dispersal

~6:30 p.m. Post-sale dinner

7:00 p.m. Jack Pine embryo & semen auction

Auctioneer: Steve Dorrان

Special Representatives:

Frank Mapletoft, Simmental Country
Gaylene Groeneveld, Simmental Trail
Don Oberg
Dennis Ericson
Mark Stock

Sale day phones:

Transcon cells
Jay Good 403/556-5563 Bob Wilson 403/540-3084

Sale Headquarters

Sandman Hotel, 2818 Gaetz Ave.
403/343-7400 Reservations 1-866-343-7263
Ask for the Transcon or Fleck Fest block of rooms.

Sale Consultant:

Roy Schwake 903/338-2117 cell: 214/542-8162

Delivery:

At the buyer's option and risk, delivery will be provided to central points in the following areas (all figures include GST):
AB \$80/animal; BC \$135/animal; SK \$135/animal; MB \$150/animal; ON \$285/animal; PQ \$310/animal; Maritimes \$365/animal.

For US buyers, assistance will be provided to arrange delivery of purchases, at the buyer's expense.

All cattle trace back to Austrian or German ancestry.

Catalog production by Jamesway Enterprises 403/938-8145.

For further information contact:

 www.TransconLivestock.com
Transcon Livestock Corp.
403/938-6680 Fax: 403/938-8176
Box 700, Okotoks, AB T1S 1A8
JG cell: 403/556-5563 BW cell: 403/540-3084
email: transcon@TransconLivestock.com

Service Sires



JACK PINE ANDY II FF1J

FULL FLECKVIEH FULLBLOOD MALE
-532404-
JWU 1J
15 January 1999

*Pictured at 42 months
2190 lbs.
42 cm. testicles*

ANTONIUS
JACK PINE ANDY 11Z -228242-KN
GREAT GUNS MITZI 11X

MAURUS
MRLN ALVA -377305-V
MISS DFM RIDGE'S ADORA72A

EGMAR
ANKA
SH ROMULUS F53R
GREAT GUNS MARI-ANN
MAURER
SISSI
RICKARDSTOWN JUMBO
CANADIAN RIDGE

BW: 83 lbs. 205 day: 763,5/5, 95, 365 day:1130,4/4, 96
This is our calving ease specialist that 12 of the 13 heifers are bred to. His calves have good length, pigment and average growth.



SALMON ARM ELTANO

FULL FLECKVIEH FULLBLOOD MALE
-549407-
SAFE 17K
08 November 2000

*Pictured at 23 months
1850 lbs.
43 cm. testicles*

MON-BIJOU MAGNUM
ELDANDI 907H -T417512-KN
WISP-WILL PEGGY 5TH

HEYWOOD ENSIGN
SALMON ARM JEAN 86H -524443-
JB DUTCHESS 454D

MON-BIJOU SIDAAR
MON-BIJOU PRULAPI 84
CONGOSIM HAMAN 82
WISP-WILL PENNY 3RD 85
SCOTTISH NEFF
BIRNE
TAKAR
CET MS MONET 92S

BW: 96 lbs. 205 day: 870; 365 day:1495.
We purchased this young bull from Salmon Arm Fleckvieh this spring. He is a complete out-cross to our herd and we like him as an individual. He moves out very smoothly on a good, big set of feet. He has a great attitude. We like his extra capacity and general conformation. At 18 months his testicles are 42 cm. He is the service sire to 16 lots.

Reference Sires



JACK PINE BANJO FF112H

FULL FLECKVIEH FULLBLOOD MALE
-T509537-
JWU 112H
21 February 1998

Pictured at Fleck Fest 2001.

BALIST
BALTIMORE -264715-
ASTINE

SH ROMULUS F53R
GREAT GUNS MITZI 11X -T173622-VKN
GREAT GUNS MARI-ANN

BALDO
TIMES
MAURER
ASTA
SIEGFRIED
MILLHILL FLOWER
BEL C&B WESTERN 2ND
CELTIC MARIA

BW:108 lbs. 205 day: 813; 365 day:1307.

We used Banjo as our walking herdsire for three years. Last year he sold as the high selling bull in the Fleck Fest sale to Baconfield Farms in Georgia. He makes great females as you can see by the three daughters in our sale, lots 221, 235 and 238. There are also three full sisters selling as lots 209, 211 and 214. Service sire to lot 229. Forty straws of semen sell.



Pictured at 3 1/2 years

JACK PINE JOHANN 22E

FULL FLECKVIEH FULLBLOOD MALE
-T344270-KN JWU 22E 26 January 1995

PARIS
PASTA -294826-
KORINA

AREIT
ALMRAUSCH -313801-
BLUEML

PASSAT
LAUBE
PATRON
KORDA
ADAM
ALMRAUSCH
AREIT
TAPFER

BW:110 lbs. 205 day: 860; 365 day:1351.

Full Austrian Import. Johann was a bull that had excellent growth, muscling, do-ability and tremendous volume. His calves excelled in vigor. The daughters are proving themselves as fertile, productive, young cows. Sire of lots 213, 216, 217, 231, 233 and 234. Forty straws of semen sell.



GREAT GUNS SEGAL 16A

FULL FLECKVIEH FULLBLOOD MALE
-T236109-KN GUNS 16A 04 February 1991

EGMAR
ANTONIUS -34899-
ANKA

SIM-ROC C&B WESTERN
GREAT GUNS ADRIA -T111854-
ADRIAN

EGON
ELRIKE
SATIN
AMSEL
CANADIAN NEFF
SIM ROC LITTA
HADRIAN
FINKE

BW:118 lbs. 205 day: 769; 365 day:1259

We used Segal for five calf crops. His daughters are still some of our best cows. They are consistent in type, fertility, excellent udders, capacity and unsurpassed pelvic size. He is a true cow maker. Adria is a full sister to BEL C&B Western II. Sire of lots 204 and 208. Forty straws of semen sell.

Mitzi Cow Family



GREAT GUNS MITZI 11X

FULL FLECKVIEH FULLBLOOD FEMALE
-T173622-VKN

GUNS 11X

CV 883738
16 January 1988

SIEGFRIED
SH ROMULUS F53R -T157954-
MILLHILL FLOWER

SULTAN
BIENE
PANZER
GULLA
SIM-ROC C&B WESTERN
ADRIAN
HAMLET
MARIA

BEL C&B WESTERN 2ND
GREAT GUNS MARI-ANN -T128463-
CELTIC MARIA

BW:105 lbs. 205 day: 680,11/100, 365 day:1107,11/100
Open.

There's not much that hasn't already been said about Mitzi. She has been a foundation cow for our herd with over half the offering influenced by her. She has proven herself many times, using a variety of sires and is a cow that has had an impact on North American Fleckviehs and will do so for many years to come. She is without a doubt the easiest doing cow that I have ever witnessed and she passes it on, along with muscle, super disposition, moderate birth weights, above average growth, moderate frame and capacity. She will be at Alta Embryo Group facilities in Calgary, ready to flush to a bull of your choice. She is selling with five #1 embryos, 3 by Laki, and 2 by Baltimore. Her last natural calf is lot 213.



Millhill Flower

Dam of SH Romulus F53R
Picture taken at 14 years of age.



Great Guns Mari-Ann 17T

Dam of Mitzi
Picture taken spring of 1989.



Jack Pine Lethal Weapon

Mitzi son who sold for \$20,000 at the 1992 Fleck Fest sale.

Mitzi Cow Family



JACK PINE MARINA 40D

FULL FLECKVIEH FULLBLOOD FEMALE
-T313423-V JWU 40D CV X359924
25 January 1994

BALIST	BALDO
BALU -263648-	TIMES
MARITA	HAXL
	MARGOT
SH ROMULUS F53R	SIEGFRIED
GREAT GUNS MITZI 11X -T173622-VKN	MILLHILL FLOWER
GREAT GUNS MARI-ANN	BEL C&B WESTERN 2ND
	CELTIC MARIA

BW:112 lbs. 205 day: 668,1/100, 365 day: 962,1/100
Al'd to BEL Western Union II -T351194- Apr 14/02. Exposed to Salmon Arm Eltano -549407- May 10 to Jul 9/02.
This cow exhibits the Mitzi attributes very well. The true "Fleckvieh Type". A definite donor prospect. A daughter of hers is working in the Rimac Simmentals herd in Quebec.



JACK PINE MARSHA FF4L

FULL FLECKVIEH FULLBLOOD FEMALE
-T578508- JWU 4L 15 February 2001

MORELLO	MARIO
MUTIG -285999-	HOFDAME
ELBA	SALAMON
	EVELIN
BALU	BALIST
JACK PINE MARINA 40D -T313423-V	MARITA
GREAT GUNS MITZI 11X	SH ROMULUS F53R
	GREAT GUNS MARI-ANN

BW:116 lbs. 205 day: 784; 365 day:1179.
Observed bred to Jack Pine Andy II -532404- Apr 4/02. Exposed to same Mar 31 to Jul 9. This heifer is the result of a flush to our Balu cow and Mutig. She is well pigmented and should be an excellent producer. Her pigmented udder development is looking superb. Look at her adjusted weaning weight!



JACK PINE KRystal 54F

FULL FLECKVIEH FULLBLOOD FEMALE
-399764- JWU 54F 15 August 1996

ANTONIUS	EGMAR
GREAT GUNS SEGAL 16A -T236109-KN	ANKA
GREAT GUNS ADRIA	SIM-ROC C&B WESTERN
	ADRIAN
SH ROMULUS F53R	SIEGFRIED
GREAT GUNS MITZI 11X -T173622-VKN	MILLHILL FLOWER
GREAT GUNS MARI-ANN	BEL C&B WESTERN 2ND
	CELTIC MARIA

BW:101 lbs. 205 day: 597.
Observed bred to Salmon Arm Eltano -549407- May 13/02. Exposed to same Apr 1 to Jul 9/02.

Krystal is a natural calf from Mitzi in 1996. A very typical Great Guns Segal female, carrying excellent depth and muscle in her rear quarter, super udder, big pelvis and she weans heavy calves. Her first calf, a heifer from Eldorado, was our high selling bred heifer in Fleck Fest '00 as lot 7 and sold to Jeff & Laurie Chappell of Prince George, BC. Last year her Banjo open heifer, that I was very high on, sold to Har Wei Simmentals of Manitoba. We flushed Krystal in 2001 to Anchor "T" Legend and there are 5 embryos in our embryo sale. This is another excellent donor prospect from Mitzi.



Jack Pine Eli 540J - daughter of Krystal 54F
Sold for \$14,500 in Fleck Fest 2000

Mitzi Cow Family



JACK PINE ELSA 52F

FULL FLECKVIEH FULLBLOOD FEMALE
-T388726- JWU 52F

13 February 1996

KLONDIKE BRUNO
GREAT GUNS BRUNO 21X -175276-
GREAT GUNS ELYSE 15U

MYALTA PARAGON 1J
SIM-ROC GWEN
GREAT GUNS MOLL'SON
GREAT GUNS ERIN
SIEGFRIED
MILLHILL FLOWER
BEL C&B WESTERN 2ND
CELTIC MARIA

SH ROMULUS F53R
GREAT GUNS MITZI 11X -T173622-VKN
GREAT GUNS MARI-ANN

BW: 114 lbs. 205 day: 668; 365 day: 953.

Observed bred to Salmon Arm Eltano -549407- Mar 29/02. Exposed to same Mar 31 to Jul 9/02.

This young cow is a full sister to Jack Pine Lethal Weapon 32B, a herd bull used in Woodsong's herd in Manitoba. A full sister, Riverbend Maria 5B, is a donor at the Double Bar D herd in Saskatchewan and produced a high selling bull in their first bull sale. Elsa has a son working in the Thul Simmental herd in Rimbey. The Mitzi x Bruno cross has been consistent in producing high growth, good udders, super disposition, good muscling and moderate mature size. We flushed Elsa in 2001.



JACK PINE HILDA 45F

FULL FLECKVIEH FULLBLOOD FEMALE
-T388005- JWU 45F

21 January 1996

HAXON
HAXENT -263035-
PIPPY

HAXL
BERTA
PATENT
PETRA
SIEGFRIED
MILLHILL FLOWER
BEL C&B WESTERN 2ND
CELTIC MARIA

SH ROMULUS F53R
GREAT GUNS MITZI 11X -T173622-VKN
GREAT GUNS MARI-ANN

BW: 80 lbs. 205 day: 666; 365 day: 975.

AI'd to Monet -58637- Apr 7/02. Exposed to Salmon Arm Eltano -549407- May 4 to Jul 9/02.

A young cow that impresses us more each year. Hilda is a moderate framed, thick, very easy keeping and excellent milking cow. She also has super feet. She is a female we definitely planned to flush. She raised a set of twin bull calves this year and they haven't pulled her down one bit. Another Mitzi daughter that could be a donor.



JACK PINE WILLO FF65K

FULL FLECKVIEH FULLBLOOD FEMALE
-549263- JWU 65K

30 January 2000

JACK PINE BALI 114F
JACK PINE CUJO 96H -415628-KN
JACK PINE ALMRAUSCH 96E

BALTIMORE
GREAT GUNS MITZI 11X
PASTA
ALMRAUSCH
HAXON
PIPPY
SH ROMULUS F53R
GREAT GUNS MARI-ANN

HAXENT
JACK PINE HILDA 45F -T388005-
GREAT GUNS MITZI 11X

BW: 90 lbs. 205 day: 677, 5/5, 94, 365 day: 923, 3/4, 94

Exposed to Salmon Arm Eltano -549407- Apr 1 to Jul 9/02.

The saying "good things come in small packages" best describes this first calf heifer. Everything is right, just compact. She has a super udder like her mother and that's what her sire is producing at Lone Stone Farms. She would be a perfect commercial type of cow in any environment.

Mitzi Cow Family



55G's 2002 heifer calf by Knight's Stinger



208

JACK PINE SARA 55G

FULL FLECKVIEH FULLBLOOD FEMALE
-T411513-V

JWU 55G

CV X268494
22 January 1997

ANTONIUS
GREAT GUNS SEGAL 16A -T236109-KN
GREAT GUNS ADRIA

SH ROMULUS F53R
GREAT GUNS MITZI 11X -T173622-VKN
GREAT GUNS MARI-ANN

EGMAR
ANKA
SIM-ROC C&B WESTERN
ADRIAN
SIEGFRIED
MILLHILL FLOWER
BEL C&B WESTERN 2ND
CELTIC MARIA

BW: 84 lbs. 205 day: 629,11/100, 365 day:1007,11/100
Observed bred to Salmon Arm Eltano -549407- May 2/02. Exposed to same Apr 1 to Jul 9/02.

Another excellent Mitzi daughter from Great Guns Segal. A full sister to lot 204. A Banjo son is working in the Triple RT Simmental herd. He was lot 2 in the 2000 Fleck Fest Sale. She is one of those trouble free cows that will be around for a long time. The calf pictured above is her 2002 fancy Knight Stinger heifer calf.



209

JACK PINE MORA FF44H

FULL FLECKVIEH FULLBLOOD FEMALE
-T504394-

JWU 44H

01 February 1998

BALIST
BALTIMORE -264715-
ASTINE

SH ROMULUS F53R
GREAT GUNS MITZI 11X -T173622-VKN
GREAT GUNS MARI-ANN

BW:110 lbs. 205 day: 608; 365 day: 931.
Exposed to Salmon Arm Eltano-549407- Apr 1 to Jul 9/02.

BALDO
TIMES
MAURER
ASTA
SIEGFRIED
MILLHILL FLOWER
BEL C&B WESTERN 2ND
CELTIC MARIA

Mora's pedigree needs no introduction. A full sister to Jack Pine Barbi and Jack Pine Mira. Jack Pine Barbi was the high selling female in the '97 Fleck Fest and is setting high standards in the Tryon Simmentals herd in PEI. Jack Pine Mira is an elite female in Lazy Teepee's herd - watch for her calves in the Fleck Fest 2002 sale. Mora has 3 full brothers doing great jobs in their herds, Jack Pine Bali in the EDN herd in Saskatchewan, Jack Pine Bandero at Yankee Creek Ranch in Oregon and Jack Pine Banjo with Baconfield Farms in Georgia. Mora is a great example of Fleckvieh's easy keeping ability. She is a full sister to lot 211 and lot 214. She has a super Klondike Goldrush heifer calf this year.



Jack Pine Mira 44F - full sib to Lots 209, 211 & 214

Mitzi Cow Family



JACK PINE LORA FF441L

FULL FLECKVIEH FULLBLOOD FEMALE
-576423- JWU 441L

08 January 2001

CSR MR SEGFRIED 176T
KNIGHT STINGER 207Y -201036-KN
MISS KNIGHT 108N

SH REMUS F54R
CSR CARN FLICKA 3H
KING ARTHUR
MISS KNIGHT 100F

BALTIMORE
JACK PINE MORA FF44H -T504394-
GREAT GUNS MITZI 11X

BALIST
ASTINE
SH ROMULUS F53R
GREAT GUNS MARI-ANN

BW: 98 lbs. 205 day: 657,5/8, 94, 365 day: 937.

Observed bred to Jack Pine Andy II -532404- May 8/02. Exposed to same Mar 31 to Jul 9/02.

A bred heifer that carries herself well. She is showing signs of an impeccable udder, which is characteristic of her pedigree.



JACK PINE MEADOW FF41H



Meadow 41H with her 2002 Eldandi heifer calf



Jack Pine Barbi 47F
Full sib to Lots 209, 211 & 214
Fleck Fest '97 High Selling Female

JACK PINE MEADOW FF41H

FULL FLECKVIEH FULLBLOOD FEMALE
-T504393- JWU 41H

28 January 1998

BALIST
BALTIMORE -264715-
ASTINE

BALDO
TIMES
MAURER
ASTA
SIEGFRIED
MILLHILL FLOWER
BEL C&B WESTERN 2ND
CELTIC MARIA

SH ROMULUS F53R
GREAT GUNS MITZI 11X -T173622-VKN
GREAT GUNS MARI-ANN

BW:102 lbs. 205 day: 682; 365 day: 982.

AI'd to BEL Western Union II -T351194- Apr 3/02. Exposed to Salmon Arm Eltano -549407- May 4 to Jul 9/02.

One of our feature cows. She should follow in the footsteps of her proven full siblings. (Check footnote of lot 209.) This is an excellent opportunity for someone to invest in a young donor of highly proven bloodlines that is a super individual. Her 2002 Eldandi heifer calf is a dandy!

Mitzi Cow Family



JACK PINE MADONNA FF53J

FULL FLECKVIEH FULLBLOOD FEMALE
-T541633- JWU 53J

09 March 1999

KLONDIKE BRUNO
GREAT GUNS BRUNO 21X -175276-
GREAT GUNS ELYSE 15U

MYALTA PARAGON 1J
SIM-ROC GWEN
GREAT GUNS MOLL'SON
GREAT GUNS ERIN
SIEGFRIED
MILLHILL FLOWER
BEL C&B WESTERN 2ND
CELTIC MARIA

SH ROMULUS F53R
GREAT GUNS MITZI 11X -T173622-VKN
GREAT GUNS MARI-ANN

BW:108 lbs. 205 day: 758; 365 day:1048.

Observed bred to Salmon Arm Eltano -549407- May 1/02. Exposed to same Apr 1 to Jul 9/02.

Lots of growth here! Birth to weaning of 3.17 lbs per day (no creep). This is very typical of the Mitzi x Bruno cross. Four full brothers and her sire were all over 920 lbs 200 day adjusted weight. Another proven pedigree to choose from.

REFERENCE SIRE JACK PINE BALI 114F

FULL FLECKVIEH FULLBLOOD MALE
-T381831-KN

JWU 114F

01 February 1996

BALIST
BALTIMORE -264715-
ASTINE

BALDO
TIMES
MAURER
ASTA
SIEGFRIED
MILLHILL FLOWER
BEL C&B WESTERN 2ND
CELTIC MARIA

SH ROMULUS F53R
GREAT GUNS MITZI 11X -T173622-VKN
GREAT GUNS MARI-ANN

BW:108 lbs. 205 day: 731; 365 day:1142.

Another great individual from this genetic cross. His daughters have good udders, muscling, do-ability and feet and legs. He sold as the high selling bull in Fleck Fest '97 to EDN Simmentals in Saskatchewan. His full sister, Barbi, also sold as the high selling female to Tryon Simmentals of PEI. Bali is the sire to Cujo. Service sire to lot 219. Ten straws of semen sell.



JACK PINE MERTA FF49J

FULL FLECKVIEH FULLBLOOD FEMALE
-532405- JWU 49J

04 April 1999

PASTA
JACK PINE JOHANN 22E -T344270-KN
ALMRAUSCH

PARIS
KORINA
AREIT
BLUEML
SIEGFRIED
MILLHILL FLOWER
BEL C&B WESTERN 2ND
CELTIC MARIA

SH ROMULUS F53R
GREAT GUNS MITZI 11X -T173622-VKN
GREAT GUNS MARI-ANN

BW:112 lbs. 205 day: 745, 3/12, 102, 365 day:1004, 6/10, 98

Exposed to Salmon Arm Eltano -549407- Apr 1 to Jul 9/02.

Merta is Mitzi's last natural calf. She should make a very productive cow and has a full Austrian sire which is a full brother to lots 219 and 225. Lots of muscle and growth here.

Mitzi Cow Family



Jack Pine Bandero 115H
Full sib to Lots 209, 211 & 214
Sold to Yankee Creek Ranch in Fleck Fest '98 for \$12,000.



Molly FF42K's 2002 calf



JACK PINE MOLLY FF42K

FULL FLECKVIEH FULLBLOOD FEMALE
-T554810- JWU 42K 04 January 2000

BALIST
BALTIMORE -264715-
ASTINE

SH ROMULUS F53R
GREAT GUNS MITZI 11X -T173622-VKN
GREAT GUNS MARI-ANN

BALDO
TIMES
MAURER
ASTA
SIEGFRIED
MILLHILL FLOWER
BEL C&B WESTERN 2ND
CELTIC MARIA

BW:102 lbs. 205 day: 721; 365 day:1040.
AI'd to BEL Western Union II -T351194- Apr 6/02. Exposed to Salmon Arm Eltano - 549407- May 4 to Jul 9/02.
Molly's first calf from Jack Pine Style says it all. She can produce! Full sister to lots 209 and 211.

JACK PINE MYLA FF57L

FULL FLECKVIEH FULLBLOOD FEMALE
-T576401- JWU 57L 21 January 2001

HAXUR
LAKI -263107-KN
ERNI

SH ROMULUS F53R
GREAT GUNS MITZI 11X -T173622-VKN
GREAT GUNS MARI-ANN

HAXL
SENNE
ZAUN
ELKE
SIEGFRIED
MILLHILL FLOWER
BEL C&B WESTERN 2ND
CELTIC MARIA

BW: 94 lbs. 205 day: 697; 365 day: 953.
Observed bred to Jack Pine Andy II -532404- Apr 13/02. Exposed to same Apr 1 to Jul 9/02.
We believe this genetic cross will produce some outstanding females that will carry the Fleckvieh advantage of milk and beef. Check out Myla's topline!



Mitzi Cow Family



JACK PINE JETTA FF510J

FULL FLECKVIEH FULLBLOOD FEMALE
-536949- JWU 510J

22 February 1999

PASTA
JACK PINE JOHANN 22E -T344270-KN
ALMRAUSCH

PARIS
KORINA
AREIT
BLUEML
KLONDIKE BRUNO
GREAT GUNS ELYSE 15U
SH ROMULUS F53R
GREAT GUNS MARI-ANN

GREAT GUNS BRUNO 21X
JACK PINE MARIKA 51F -T388002-
GREAT GUNS MITZI 11X

BW:100 lbs. 205 day: 673,12/12, 92, 365 day: 940,10/10, 91
Observed bred to Salmon Arm Eltano -549407- Apr 13/02. Exposed to same Apr 1 to Jul 9/02.

Unfortunately we lost her calf this year (totally management's fault). With her bloodline, she should produce thick, growthy calves. She has a good udder.

216



JACK PINE JOSI FF430J

FULL FLECKVIEH FULLBLOOD FEMALE
-532412- JWU 430J

23 February 1999

PASTA
JACK PINE JOHANN 22E -T344270-KN
ALMRAUSCH

PARIS
KORINA
AREIT
BLUEML
HAXON
PIPPY
SH ROMULUS F53R
GREAT GUNS MARI-ANN

HAXENT
JACK PINE MARLENE 43F -T387997-V
GREAT GUNS MITZI 11X

BW:108 lbs. 205 day: 739,6/12,101, 365 day:1042,4/10,101
Implanted with a Mitzi x BEL Western Union II -T351194-embryo Apr 25/02. Exposed to Salmon Arm Eltano -549407- May 4 to Jul 9/02.

This young second calver has a different bloodline. She is a smaller framed cow that can get the job done. She was implanted with a Mitzi x BEL Western Union II embryo on Apr 25/02. We are 99% sure it stuck.

217



JACK PINE JO-ANN FF431L

FULL FLECKVIEH FULLBLOOD FEMALE
-576421- JWU 431L

16 January 2001

JACK PINE ANDY 11Z
JACK PINE ANDY II FF1J -532404-
MRLN ALVA

ANTONIUS
GREAT GUNS MITZI 11X
MAURUS
MISS DFM RIDGE'S ADORA72A
PASTA
ALMRAUSCH
HAXENT
GREAT GUNS MITZI 11X

JACK PINE JOHANN 22E
JACK PINE JOSI FF430J -532412-
JACK PINE MARLENE 43F

BW: 92 lbs. 205 day: 657,6/8, 94, 365 day: 946.
AI'd to Jack Pine Style -284394- Apr 26/02. Exposed to Jack Pine Andy II -532404- May 30 to Jul 9/02.

Jo-Ann should make one of those middle of the road type cows. Average birth weights, muscle, growth and milk. She is the only heifer that we had to AI because her sire is our calving ease specialist that we used on our heifers.

218

Almrausch Cow Family



ALMRAUSCH

FULL FLECKVIEH FULLBLOOD FEMALE
-313801-
JWU 100T
07 January 1985

ADAM
AREIT AT-284073771-
ALMRAUSCH

AREIT
BLUEML AT328650171-
TAPFER

AGENT
LORE
KAROL
NELKE
ADAM
LMRAUSCH
TARZAN
EDELWEISS

Height at withers: 139 cm (54.7") Average milk production: 5,377 kg. Average protein: 3.36% Average butterfat: 4.34%

Rating as a cow: 9,9,9,7

Size 9 (out of a possible 9)
Muscling 9 (out of a possible 9)
Conformation 9 (out of a possible 9)
Udder 7 (out of a possible 9)

Size is a four way combination of measured length, body mass weight, height at withers and girth diameter measurement.

Muscling is a visual evaluation of total muscle at approximately three years of age, following first lactation.

Visual evaluation for breed type, pelvis shape, quality of legs and feet.

Visual evaluation for udder attachment, udder size, teat size, length, placement, extra teats, for and aft udder uniformity, mammary supply vein size.

We feel very fortunate to have selected embryos from this elite Austrian cow. She gave us two flushes, one from Pasta and one from Zeus. To the best of my knowledge she is the 2nd highest ranking cow that has had any progeny or semen from a son, imported to North America. She ranks as a 9,9,9,7 cow. Almrausch comes from a valley in the Alps where a cheese factory has been for over 100 years. The farmers breed cows for quality milk with high butter fat and high protein for the cheese. These are the characteristics we need for nurse cows.

REFERENCE SIRE JACK PINE CUJO 96H

FULL FLECKVIEH FULLBLOOD MALE
-415628-KN
JWU 96H
31 January 1998

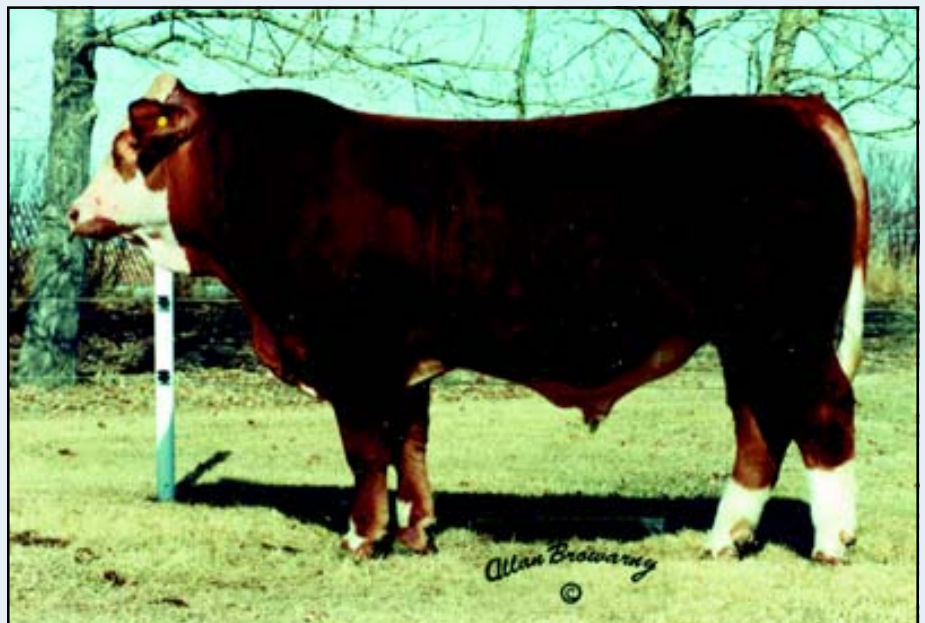
BALTIMORE

JACK PINE BALI 114F -T381831-KN
GREAT GUNS MITZI 11X
PASTA

JACK PINE ALMRAUSCH 96E -T343930-V
ALMRAUSCH

BW:106 lbs. 205 day: 838,3/5,100, 365 day:1319.

Cujo sold to Lone Stone Farms of Westlock, Alberta as the 3rd high selling bull in Fleck Fest '98. Cujo is doing a great job as a sire of both females and males. His daughters have superb udders and capacity along with good feet and pigmentation. His sons have excellent growth and muscle along with capacity and good feet and legs. Sire of lot 207. Five straws of semen sell.



Almrausch Cow Family

JACK PINE ALMRAUSCH 96E



FULL FLECKVIEH FULLBLOOD FEMALE
-T343930-V JWU 96E

CV X046602
21 February 1995

PARIS
PASTA -294826-
KORINA

PASSAT
LAUBE
PATRON
KORDA
ADAM
ALMRAUSCH
AREIT
TAPFER

AREIT
ALMRAUSCH -313801-
BLUEML

BW:112 lbs. 205 day: 805; 365 day:1168.

Al'd to Jack Pine Bali 114F -T381831- Mar 27/02. Exposed to Salmon Arm Eltano -549407-
May 3 to Jul 9/02.

Almrausch is a large, wide hipped, very deep bodied cow. She has a good udder and moves freely for a cow her size. Her second natural calf, Cujo, is passing on her attributes to his daughters. She is a fertile cow, always conceiving on the first breeding. She has always been a prolific producer of embryos, averaging 15.6 freezable embryos per flush, from six flushes. This cow should contribute greatly to anyone's program.



JACK PINE ASTA FF81L

FULL FLECKVIEH FULLBLOOD FEMALE
-T576406- JWU 81L 08 February 2001

BALTIMORE
JACK PINE BALI 114F -T381831-KN
GREAT GUNS MITZI 11X

BALIST
ASTINE
SH ROMULUS F53R
GREAT GUNS MARI-ANN
PARIS
KORINA
AREIT
BLUEML

PASTA
JACK PINE ALMRAUSCH 96E -T343930-V
ALMRAUSCH

BW: 92 lbs. 205 day: 717; 365 day:1022.

Observed bred to Jack Pine Andy II -532404- Apr 9/02. Exposed to same Mar 31 to Jul 9/02.

This full sister to Jack Pine Cujo is showing great promise. She is missing some tail and the tips of her ears but everything else is there. Look for good things to come from Asta.



JACK PINE REITA FF76L

FULL FLECKVIEH FULLBLOOD FEMALE
-576404- JWU 76L 04 February 2001

BALTIMORE
JACK PINE BANJO FF112H -T509537-
GREAT GUNS MITZI 11X

BALIST
ASTINE
SH ROMULUS F53R
GREAT GUNS MARI-ANN
PARIS
KORINA
AREIT
BLUEML

PASTA
JACK PINE ALMRAUSCH 96E -T343930-V
ALMRAUSCH

BW:102 lbs. 205 day: 690,4/8, 99, 365 day: 982,3/5, 98

Observed bred to Jack Pine Andy II -532404- Apr 7/02. Exposed to same Mar 31 to Jul 9/02.

This bred heifer could follow in her mother's footsteps. A genetic cross with some powerful maternal strengths. Don't pass her up!

Almrausch Cow Family



JACK PINE IMA FF86L

FULL FLECKVIEH FULLBLOOD FEMALE
-T576407- JWU 86L 07 February 2001

SIEGFRIED	SULTAN
ABR SIR ARNOLDS IMAGE -T140262-KN	BIENE
ABR SHINAGH VIOLET	SEPPERL
	VERA
PASTA	PARIS
JACK PINE ALMRAUSCH 96E -T343930-V	KORINA
ALMRAUSCH	AREIT
	BLUEML

BW: 90 lbs. 205 day: 670; 365 day: 923.
Observed bred to Jack Pine Andy II -532404- Apr 3/02. Exposed to same Mar 31 to Jul 9/02.

This heifer could be quite a cow with her genetic makeup. She is very attractive and carries good muscle. She has a real cow head like all of Jack Pine Almrausch's daughters do.



JACK PINE SELMA FF90L

FULL FLECKVIEH FULLBLOOD FEMALE
-T576408- JWU 90L 10 January 2001

LOTUS	LONER
STEWARD -266322-	GERDA
MARGOT	MOSES
	MARGIT
PASTA	PARIS
JACK PINE ALMRAUSCH 96E -T343930-V	KORINA
ALMRAUSCH	AREIT
	BLUEML

BW: 82 lbs. 205 day: 617; 365 day: 956.
Observed bred to Jack Pine Andy II - 532404- Apr 2/02. Exposed to same Mar 31 to Jul 9/02.

These two daughters from Steward should make great brood cows. They are well pigmented, deep bodied and show excellent udder development. Steward has already proven himself for strong maternal genetics.



JACK PINE ALDA FF93L

FULL FLECKVIEH FULLBLOOD FEMALE
-T576419- JWU 93L 27 January 2001

LOTUS	LONER
STEWARD -266322-	GERDA
MARGOT	MOSES
	MARGIT
PASTA	PARIS
JACK PINE ALMRAUSCH 96E -T343930-V	KORINA
ALMRAUSCH	AREIT
	BLUEML

BW:108 lbs. 205 day: 733; 365 day:1037.
Exposed to Jack Pine Andy II -532404- Mar 31 to Jul 9/02.



JACK PINE ELAN 98E

FULL FLECKVIEH FULLBLOOD FEMALE
-T344267-V JWU 98E CV X046608
04 March 1995

PARIS	PASSAT
PASTA -294826-	LAUBE
KORINA	PATRON
	KORDA
AREIT	ADAM
ALMRAUSCH -313801-	ALMRAUSCH
BLUEML	AREIT
	TAPFER

BW: 98 lbs. 205 day: 690; 365 day:1048.
Observed bred to Salmon Arm Eltano -549407- Apr 30/02. Exposed to same Apr 1 to Jul 9/02.

This cow is maybe the best kept secret in our herd. She has given us four excellent daughters, two of which were sold in the Fleck Fest sales. Gist Simmentals have a Bali daughter working very well for them and Lazy RS Ranch has another Bali daughter that is heading up their developing Fleckvieh herd. Elan is a young cow waiting for stardom in someone's herd. This is Jack Pine Almrausch's full sister.

Almrausch Cow Family



REFERENCE DAM JACK PINE ZANDI 95E

FULL FLECKVIEH FULLBLOOD FEMALE
-T344268-VKN JWU 95E CV X046603
19 February 1995

ZELOT	ZENITH
ZEUS -292914-	HEDWIG
RELLA	PENKO
	RETA
AREIT	ADAM
ALMRAUSCH -313801-	ALMRAUSCH
BLUEML	AREIT
	TAPFER

BW:100 lbs. 205 day: 733; 365 day:1121.

Zandi was the result of a flush from Almrausch to Zeus. A powerful and unique bloodline that produced an exceptional individual. It was very unfortunate the we lost this young cow due to some unusual circumstances. There are two daughters, lots 226 and 228, and one granddaughter, lot 227, to carry on her genetics.



JACK PINE ZETTA FF75J

FULL FLECKVIEH FULLBLOOD FEMALE
-532407- JWU 75J 19 February 1999

BALIST	BALDO
BALTIMORE -264715-	TIMES
ASTINE	MAURER
	ASTA
ZEUS	ZELOT
JACK PINE ZANDI 95E -T344268-VKN	RELLA
ALMRAUSCH	AREIT
	BLUEML

BW:102 lbs. 205 day: 720,8/12, 99, 365 day: 974,8/10, 95

AI'd to Smithbilt Freightliner 91J -T521991- Apr 12/02. Exposed to Salmon Arm Eltano - 549407- May 15 to Jul 9/02.

Here is the only natural heifer calf of Jack Pine Zandi. Her first two calves have done her proud and exhibit Zandi's attributes. Zetta's first calf is lot 227 and weaned at 851 lbs. Need I say more! Her 2002 bull calf also looks great.



JACK PINE ZOLLA FF70L

FULL FLECKVIEH FULLBLOOD FEMALE
-576403- JWU 70L 19 January 2001

MOLL 2ND	MOLL
GREAT GUNS MOLL'SON -111852-	LENI
CELTIC MARIA	HAMLET
	MARIA
BALTIMORE	BALIST
JACK PINE ZETTA FF75J -532407-	ASTINE
JACK PINE ZANDI 95E	ZEUS
	ALMRAUSCH

BW:106 lbs. 205 day: 802,1/8,115, 365 day:1143,1/5,114

Observed bred to Jack Pine Andy II -532404- Apr 13/02. Exposed to same Mar 31 to Jul 9/02.

Here is a powerful individual with some different bloodlines. We think she will definitely qualify as a potential donor. She is hard to fault.



JACK PINE ZANA FF5L

FULL FLECKVIEH FULLBLOOD FEMALE
-T576395- JWU 5L 17 February 2001

BEL WESTERN UNION 5Z	RICKARDSTOWN JUMBO
BEL WESTERN UNION 2ND -T351194-KN	BEL HELGA 9TH
MOYGADDY JENNIFER	HAMLET
	WENDY
ZEUS	ZELOT
JACK PINE ZANDI 95E -T344268-VKN	RELLA
ALMRAUSCH	AREIT
	BLUEML

BW:116 lbs. 205 day: 754; 365 day:1000.

Observed bred to Jack Pine Andy II -532404- Mar 31/02. Exposed to same Mar 31 to Jul 9/02.

Another direct daughter of Zandi and an old reliable bloodline with BEL Western Union II. She is missing the tip of her tail but everything else looks great.

Hanna Cow Family



HANNA

FULL FLECKVIEH FULLBLOOD FEMALE

-266324-

WBL 6A

27 December 1991

ZELOT
ZEPF DD-20139-
FABI

PAZOKA
HELGA DD-6757934-
HELENE

ZENITH
HEDWIG
HELLAS
FABIA
PATEX
ROSI
SACHER
HELGA

We acquired some embryos from this excellent German cow through Alta Genetics. She scored very well at 9,9,8,7 and comes from the famous old Zelos bloodline. She is the old Fleckvieh type.

JACK PINE ANKA 30D

FULL FLECKVIEH FULLBLOOD FEMALE

-T313805-V

JWU 30D

CV X135748

21 January 1994

BALBO
BALISTO -267516-
TOSKA

ZEPF
HANNA -266324-
HELGA

BALI
GISELLA
ROMULUS
TAUBE
ZELOT
FABI
PAZOKA
HELENE

BW: 87 lbs. 205 day: 632,1/100, 365 day: 963,1/100

AI'd to Jack Pine Banjo -T509537- Mar 29/02. Exposed to Salmon Arm Eltano -549407- May 3 to Jul 9/02.

Anka is a medium sized cow that milks heavily and has raised some excellent calves. She has mated well with the different bulls we have used on her. She passes on lower birth weights. This is a good opportunity to get some different bloodlines in your herd. Her two daughters sell as lots 230 and 231.



JACK PINE ANNA 32F

FULL FLECKVIEH FULLBLOOD FEMALE

-380950-V

JWU 32F

CV X135789

18 March 1996

GREAT GUNS SEGAL 16A
JACK PINE DAL 111D -326337-
GREAT GUNS MITZI 11X

BALISTO
JACK PINE ANKA 30D -T313805-V
HANNA

ANTONIUS
GREAT GUNS ADRIA
SH ROMULUS F53R
GREAT GUNS MARI-ANN
BALBO
TOSKA
ZEPF
HELGA

BW: 84 lbs. 205 day: 714,2/7,105, 365 day:1023,1/4,109

Bred to Salmon Arm Eltano -549407- Mar 28/02. Exposed to same May 10 to Jul 9/02.

This cow does a great job and passes on her mother's and grandmother's qualities. D Bar L Simmentals selected two of her daughters for their progressive Fleckvieh herd. Like her mother, she has mated well with the bulls used on her.



Hanna & Andrea Cow Families



JACK PINE AURA FF35H

FULL FLECKVIEH FULLBLOOD FEMALE
-504396- JWU 35H

21 February 1998

PASTA
JACK PINE JOHANN 22E -T344270-KN
ALMRAUSCH

PARIS
KORINA
AREIT
BLUEML
BALBO
TOSKA
ZEPF
HELGA

BALISTO
JACK PINE ANKA 30D -T313805-V
HANNA

BW: 88 lbs. 205 day: 716,6/8, 96, 365 day: 949,5/5, 90
Bred to Salmon Arm Eltano -549407- Apr 21/02. Exposed to same May 3 to Jul 9/02.
This young Johann daughter has a tremendous heifer calf this year. A strong, young, working type cow.



K2 ANDREA 6C

FULL FLECKVIEH FULLBLOOD FEMALE
CV CV35651

-279844-V
KRIN 6C
11 January 1993

SIM-ROC C&B WESTERN
BEL C&B WESTERN 2ND -60889-
ADRIAN

SRF MR BIGFOOT S138
KLONDIKE AUDREY -T206213-
SIM-ROC GWEN

BW:106 lbs. 205 day: 679,4/4, 98,
Observed to Salmon Arm Eltano -549406- May 29/02. Exposed to same May 3 to Jul 9/02.

CANADIAN NEFF
SIM ROC LITTA
HADRIAN
FINKE
BIGFOOT
BGR SIEGFRIED'S JANET
BOLD
SIM-ROC GOLDA

We were very happy to have acquired this cow from the Krinke's dispersal. She is heavily muscled, well pigmented and has a gentle attitude. We flushed her last year with good results. Note her pedigree. Her dam is the full sister to Klondike Arnie. In the spring of 2001 we had to remove one front claw due to a complication from foot rot. She made a speedy recovery and it hasn't been a problem. Her natural 2001 calf is lot 235. We flushed her in April 2002 and she bred back on the second heat.



JACK PINE ADIE FF62H

FULL FLECKVIEH FULLBLOOD FEMALE
-504398- JWU 62H

TWIN
08 May 1998

PASTA
JACK PINE JOHANN 22E -T344270-KN
ALMRAUSCH

PARIS
KORINA
AREIT
BLUEML
SIM-ROC C&B WESTERN
ADRIAN
SRF MR BIGFOOT S138
SIM-ROC GWEN

BEL C&B WESTERN 2ND
K2 ANDREA 6C -279844-V
KLONDIKE AUDREY

BW: 80 lbs. 205 day: 617;
Bred to Salmon Arm Eltano -549407- Mar 28 /02. Exposed to same Mar 31 to Jul 9/02.
These twin daughters of Andrea by Jack Pine Johann are developing into excellent cows. Both raised real good bull calves this year. We think they will go on to be real productive cows for someone.

Andrea Cow Family

234. JACK PINE REA FF63H

FULL FLECKVIEH FULLBLOOD FEMALE TWIN
-504399- JWU 63H 08 May 1998

PASTA
JACK PINE JOHANN 22E -T344270-KN
ALMRAUSCH

BEL C&B WESTERN 2ND
K2 ANDREA 6C -279844-V
KLONDIKE AUDREY

PARIS
KORINA
AREIT
BLUEML
SIM-ROC C&B WESTERN
ADRIAN
SRF MR BIGFOOT S138
SIM-ROC GWEN

BW: 68 lbs. 205 day: 595;
Bred to Salmon Arm Eltano -549407- Apr 8/02. Exposed to same Mar 31 to Jul 9/02.



Jack Pine Lexus FF60L with her dam K2 Andrea 6C

JACK PINE LEXUS FF60L

FULL FLECKVIEH FULLBLOOD FEMALE
-576402-
JWU 60L
06 February 2001

BALTIMORE
JACK PINE BANJO FF112H -T509537-
GREAT GUNS MITZI 11X
BEL C&B WESTERN 2ND
K2 ANDREA 6C -279844-V
KLONDIKE AUDREY

BW:102 lbs. 205 day: 647,7/8, 93, 365 day: 927,4/5, 92
Observed bred to Jack Pine Andy II -532404- Apr 20/02. Exposed to same Mar 31 to Jul 9/02.
Lexus should develop into a very useful female. A cow you will be able to breed to a lot of different bloodlines. She exhibits the qualities of both parents.



Austrian Imports



Senta 36Z and her 2002 bull calf

GREAT GUNS SENTA 36Z

FULL FLECKVIEH FULLBLOOD FEMALE CV 35625
-T226691-V GUNS 36Z 22 February 1990

STREIF	STREITER
STRAHL -213202-	HEDI
KLARA	HOFER
	KAROLA
MOSES	MURAT
SENTA -213169-	MINA
SENTA	MONITOR
	SORAYA

BW: 95 lbs. 205 day: 667; 365 day: 971.

Sells open and ready to flush.

Senta stems from the first group of embryos that came to Canada. We bought her at the Great Guns dispersal at nine years of age. She has proven herself as a great bull maker with Fredrick, her first calf. Her 2002 bull calf looks like another great one.

JACK PINE GRETL 92G

FULL FLECKVIEH FULLBLOOD FEMALE CV X268491
-T411520-V JWU 92G 26 January 1997

PARIS	PASSAT
PASTA -294826-	LAUBE
KORINA	PATRON
	KORDA
SAMUEL	SALAMON
GRETL -329709-	ADRIA
GRASL	PAUL
	GRETL

BW: 98 lbs. 205 day: 641,1/100, 365 day:1018,1/100

Bred to Salmon Arm Eltano -549407- Apr 16/02. Exposed to same May 3 to Jul 9/02.

This Austrian import comes from a Salamon granddaughter which we flushed in Austria to Pasta. Gretl's 2000 heifer calf sold in the 2001 Fleck Fest to G7 Acres as lot 26. She has the full sister at side this year and she looks like she will be another good one. Here is another cow with some different bloodlines.



Gretl 92G's 2002 heifer calf by Jack Pine Banjo



JACK PINE BERLA FF416L

FULL FLECKVIEH FULLBLOOD FEMALE
-576420- JWU 416L 07 February 2001

BALTIMORE	BALIST
JACK PINE BANJO FF112H -T509537-	ASTINE
GREAT GUNS MITZI 11X	SH ROMULUS F53R
	GREAT GUNS MARI-ANN
GREAT GUNS FREDERICK 48B	GREAT GUNS FERDINAND 13Z
JACK PINE ERIKA 116D -T343312-V	GREAT GUNS SENTA 36Z
BEL BIANKA 114A	PAROS
	BIANKA

BW:106 lbs. 205 day: 742,3/8,107, 365 day:1077,2/5,107

Bred to Jack Pine Andy II -532404- Mar 31/02. Exposed to same Mar 31 to Jul 9/02.

This is a good bred, showing a lot of potential. Check out her bloodlines and you will see she is loaded with strong maternal genetics.



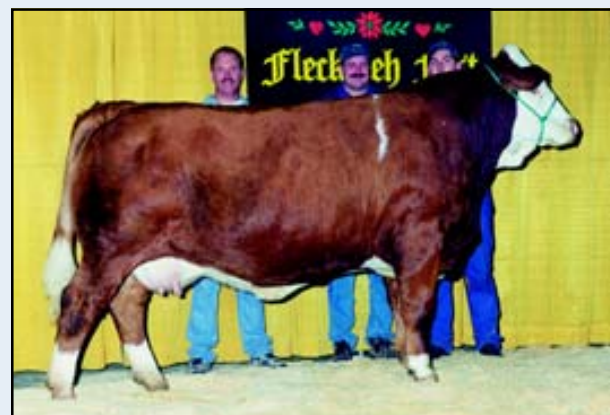
Embryos

All of the embryos will be stored at Independent Breeders of Airdrie, AB. They have been pre-packaged by Emtech genetics in the quantities listed. They are all #1 quality and direct thaw except for the SAO 65R X Balist embryos. Those are not direct thaw and there are 1 #1 and 2 #2s.

Dam	Sire	Quantity
39A SAO Lady 65R (C&B Western)	Balist	3
39B Jack Pine Almrausch 96E	Eldandi	3
39C "	"	3
39D "	"	2
39E Jack Pine Almrausch 96E	Klondike Goldrush	3
39F "	"	3
39G Jack Pine Almrausch 96E	SH Romulus 53H	3
39H Jack Pine Almrausch 96E	Steward ET	1
39I Jack Pine Elsa 52F X (GG Mitzi X GG Bruno)	Smithbilt Freightliner	2
39J Great Guns Mitzi 11X	BEL Western Union II	3
39K "	"	3
39L Great Guns Mitzi 11X	Eldandi	2
39M "	(South African)	2
39N Great Guns Mitzi 11X	Laki	3
39O "	"	3
39P Jack Pine Krystal 54F	Anchor "T" Legend	3
39Q " (GG Mitzi X GG Segal)	"	3
39R K2 Andrea 6C	Jack Pine Banjo	5
39S " (C&B Western II) full sibs to lot 235		5
39T K2 Andrea 6C Solway Adonis	KFFC Harley Solway	3
KFFC Harley Solway		
Pirkach		
KFF Billie Pirkach		
SH Ruth F52R (full sister to Romulus)		



Eldandi - South African sire



Jack Pine Hessie 33D

39W Jack Pine Hessie 33D Bar 5 Bernheim 2
(German import) (S. African)
Jack Pine Hessie is a full sib to lot 229



BHR Lady Suzannah 208K

39U BHR Lady Suzannah 208K Jack Pine Banjo 2
(S. African import)
39V BHR Lady Suzannah 208K Solway Adonis 2

HAGEN
KYKSO HADAU
KYKSO DAUNE 78
BHR LADY SUZANNAH 208K -T540434-
HAGEN
CONGOSIM SUSI
VOIGTLAND SELLI 71

Our half ownership of this South African female was sold to our son Shane. Pat McEwen of Edmonton and Shane will continue to work with this special lady.



Ms Valeen 7D

39X Ms Valeen 7D Jack Pine Banjo 5
(Great Guns Segal)
Ms Valeen 7D is a full sib to Jack Pine Style

Semen

All semen is Full Fleckvieh. Most of the semen is also stored at Independent Breeders except for four lots as designated as being at Alta Genetics in Balzac. Purchasers will be responsible for handling and storage charges after the sale. (The semen will be sold in the listed quantities. For instance, there are 5 doses of Antonius selling in two lots of 3 doses and 2 doses.)

40A Arnolds Image T140262	2
40B Arnie 8M 53471	2
40C Antonius 34899	3
40D "	2
40E Baltimore 264715	3
40F Bar 5 Bernheim 405H T415498	1
40G Bel C&B Western 2 nd 60889	2
40H "	2
40I BEL C&B Western 4 th T68913	10 at Alta Genetics
40J "	10 "
40K "	10 "
40L "	10 "
40M Balu 263648	2
40N "	2
40O Great Guns Bruno 21X 175276	7
40P Great Guns Mollson 111852	3
40Q Great Guns Segal 16A T236109	10 at Alta Genetics
40R "	10 "
40S "	10 "
40T "	10 "
40U Hockenhall Magnum 113577	3
40V Jack Pine Andy 11Z 228242	10
40W Jack Pine Bali 114F T381831	10
40X Jack Pine Candu 45E T343929	10
40Y "	10
40Z "	10
41A Jack Pine Cujo 96H 415628	5 at Alta Genetics
41B Jack Pine Ego 10E T344265	10
41C "	10
41D "	10
41E "	10
41F Jack Pine Johann 22E T344270	10
41G "	10
41H "	10
41I "	10
41J Jack Pine Lethal Weapon T262393	10 at Alta Genetics
41K "	10 "
41L "	10 "
41M "	08 "
41N Jack Pine Banjo FF 112HT509537	10
41O "	10
41P "	10
41Q "	10
41R KCN E208 (Panzer son) T378309	10
41S Knight Stinger 201036	10
41T Laki 263107	5
41U Maurus 288824	2
41V MFL Magnate 164547	3
41W Mutig 285999	7
41X Monet 58637	3
41Y "	3
41Z Riverbend 12B (CB 2 son) 267809	10
42A "	10
42B SH Romulus F53R T157954	3
42C Sir Arnold S4012 T126898	4

42D Solway Adonis 3499	3
42E	2
42F Sterling Herkules 243706	4



BEL C&B WESTERN 4TH "VON"

CANADIAN NEFF
SIM ROC C&B WESTERN
SIM ROC LITTA
RASER
HELGA 103D
ERIKATE

Von was our first full Fleckvieh herdsire, purchased from the Fleck icon "Nick" in 1982. Von was a direct son of his "Million Dollar Cow" Helga 103D.

Terms & Conditions

TERMS - The terms of the sale are cash or cheque payable at par at sale location unless satisfactory credit arrangements have been made previous to the sale. The right of property shall not pass until after settlement is made. Transcon Livestock Corp. reserves the right to require a certified cheque as settlement before releasing any sale cattle. Should any purchaser fail to settle for his purchase Transcon Livestock Corp. reserves full power to resell the animal to the best advantage either publicly or privately, without further notice. Any loss arising from such resale together with keep and all other expenses shall be payable by the defaulter. All settlements must be made with the clerks of the sale before any cattle will be released.

BID - Every animal consigned to the sale must be sold by auction. No private sales will be allowed except as otherwise provided for in the terms and conditions. No by-bidding will be permitted. Each animal will be sold to the highest bidder.

DISPUTES - In cases of disputes, bidding will be reopened between the parties involved. If no further bid is made the buyer will be the person from whom the auctioneer accepted the last bid. The auctioneer's decision in such matters will be final.

PURCHASER'S RISK - Each animal becomes the risk of the purchaser as soon as sold. Animals will be cared for at the purchaser's risk for a reasonable length of time.

ANNOUNCEMENTS from the auction block will take precedence over the printed matter in the catalog. Buyers are therefore cautioned to pay attention to any such announcements.

CERTIFICATE OF REGISTRY - The proper Registration or Recordation paper, as the case may be, will be duly transferred and furnished to the buyer for each animal after settlement has been made.

SHIPPING - Assistance will be given in making shipment after the sale but no risk is assumed by the Sales Management or Seller. Expenses incurred are the responsibility of the purchaser. Purchasers are requested to furnish shipping instructions when making settlement.

GUARANTEE - As this is a dispersal sale all cattle will be selling as is with no further guarantee. However, bred females will be pregnancy tested and results along with any pertinent information known to the owners will be announced from the auction block.

EXCEPTION TO GUARANTEE - In cases where the animal is subjected to any hormonal or surgical reproduction techniques after the sale, the guarantee shall be null and void.

HEALTH - All animals will have passed the required tests as determined by Agriculture Canada at sale location. It is the buyer's responsibility to determine health requirements for importing any animal into his province or state. Transcon Livestock Corp. assumes no responsibility for the health status of any animal in the sale.

ACCIDENTS - Although every precaution will be taken to protect the safety and comfort of buyers, neither the Sales Management, auctioneer, or Association assumes any responsibility in this matter and disclaims any liability legal or otherwise in the event of accident or loss of property.

RIGHTS AND OBLIGATIONS - The above terms and conditions of the sale shall constitute a contract between the buyer and the seller and be equally binding to both. Resale of animals following purchase in this sale shall constitute a separate transaction and the rights and obligations of the two parties connected thereto are not covered by the terms and conditions of this sale.

TRANSCON LIVESTOCK Corp. IS AGENT ONLY - It is to be clearly understood that Transcon Livestock Corp. is only acting as a medium between buyer and seller and is not in any way responsible for any failure on the part of either party to live up to his obligations, neither does Transcon Livestock Corp. assume any financial obligations to collect or enforce collection of any monies between parties, and any legal action that may, in exceptional cases, be taken, must be between buyer and seller.

The Auctioneer shall have the right to refuse bids from anyone who has a previous record of default in payment or who has not made proper credit clearance prior to the sale with the owner or Sale Managers.

We Thank...

our "cubs" and their families for their "blood, sweat and unconditional support" throughout our 26 years in the Simmental business and especially the last 15, with the Fleckvieh Fest sales!



Wolfe Farms
The Entrepreneur
Tony & Lisa, Courtney & Riley
Valleyview, AB



Wolfe's Fleckvieh
The Enforcer
Shane & Shannon, Hanna & Carmen
Anzac, AB



The Organizer
Sharlene & Greg Hrabec
Calgary, AB